

VEVOR

Affordable. Reliable. Home Improvement.

Electric Chainsaw Sharpener

Model:2002K1

VEVOR Support Center



Model: 2002K1

VEVOR

Affordable. Reliable. Home Improvement.




ELECTRIC CHAINSAW
SHARPENER

Model:2002K1



This is the original instruction, please read all manual instructions carefully before operating. VEVOR reserves a clear interpretation of our user manual. The appearance of the product shall be subject to the product you received. Please forgive us that we won't inform you again if there are any technology or software updates on our product.

SAFETY INSTRUCTIONS

	Read the instruction manual.
	Warning- Be sure to wear eye protectors when using this product.
	Warning- Be sure to use soundproof earmuffs when using this product.

Warning: To reduce the risk of injury, user must read instructions manual carefully. Ignore the warning, non-proper use of compact bender could lead to fatal and serious injury.

Save This Manual

You will need the manual for the safety warnings and precautions, assembly instructions, operating and maintenance procedures, parts list and diagram. Keep the manual in a safe and dry place for future reference.

Safety Warnings and Precautions

WARNING: When using tools, basic safety precautions should always be followed to reduce the risk of personal injury and damage to equipment.

Read all instructions before using this tool!

1. Keep work area clean. Cluttered areas invite injuries.
2. Observe work area conditions. Do not use machines or power tools in damp or wet locations. Don't expose to rain. Keep work area well lighted. Do not use electrically powered tools in the presence of flammable gasses or liquids.
3. Keep children away. Children must never be allowed in the work area, Do not let them handle machines, tools, or extension cords.
4. Store idle equipment. When not in use, tools must be stored in a dry location to

inhibit rust. Always lock up tools and keep out of reach of children.

5. Use the right tool for the job. Do not attempt to force a small tool or attachment to do the work of a larger industrial tool. There are certain applications for which this tool was designed. It will do the job better and more safely at the rate for which it was intended. Do not modify this tool and do not use this tool for a purpose for which it was not intended.

6. **Dress properly.** Do not wear loose clothing or jewelry as they can be caught in moving parts. Protective, electrically non-conductive clothes and no-skid footwear are recommended when working. Wear restrictive hair covering to contain long hair

7. Use eye and ear protection. Always wear ANSI approved impact safety goggles. Wear a full face shield if you are producing metal filings or wood chips.

8. Do not overreach. Keep proper footing and balance at all times. Do not reach over or across running machines.

9. Maintain tools with care. Keep tools sharp and clean for better and safer performance. Follow instructions for lubricating and changing accessories. Inspect tool cords periodically and if damaged, have them repaired by an authorized technician. The handles must be kept clean, dry, and free from oil and grease at all times.

10. Avoid unintentional starting. Be sure the switch is in the Off position when not in use and before plugging in.

11. Stay alert. Watch what you are doing, use common sense. Do not operate any tool when you are tired.

12. Check for damaged parts. Before using any tool, any part that appears damaged should be carefully checked to determine that it will operate properly and perform its intended function. Check for alignment and binding of moving parts; any broken parts or mounting fixtures; and any other condition that may affect proper operation. Any part that is damaged should be properly repaired or replaced by a qualified technician. Do not use the tool if any switch does not turn On and Off properly.

13. Guard against electric shock. Prevent body contact with grounded surfaces such as pipes, radiators, ranges, and refrigerator enclosures.

14. Replacement parts and accessories. When servicing, use only identical replacement parts. Use of any other parts will void the warranty. Only use

accessories intended for use with tool.

15. Do not operate tool if under the influence of alcohol or drugs. Read warning labels on prescriptions to determine if your judgment or reflexes are impaired while taking drugs. If there is any doubt, do not operate the tool.

16. Use proper size and type extension cord. If an extension cord is required, it must be of the proper size and type to supply the correct current to the tool without heating up. Otherwise, the extension cord could melt and catch fire, or cause electrical damage to the tool. This tool requires use of an extension cord of 0 to 10 amps capability (up to 50 feet),with wire size rated at 18 AWG. Longer extension cords require larger size wire. If you are using the tool outdoors, use an extension cord rated for outdoor use.

17. Maintenance. For your safety, maintenance should be performed regularly by a qualified technician.

18. Never use the Electric Chainsaw Sharpener around flammable materials.

Note: Performance of this tool (if powered by line voltage) may vary depending on variations in local line voltage. Extension cord usage may also affect tool performance.

Warning: The warnings, cautions, and instructions discussed in this instruction discussed in this instruction manual cannot cover all possible conditions and situations that may occur. It must be understood by the operator that common sense and caution are factors which cannot be built into this product, but must be supplied by the operator of the tool.

Additional Safety Warnings

Grinding Wheel Warnings

1. Do not use a grinding wheel if it is chipped, cracked, or worn. You can check if the wheel has cracks not visible to the human eye by hanging it up by the central hole and tapping it with a non-metal object (ie: screwdriver handle). If it is in good condition it will produce a metallic sound. A dull sound indicates a crack or break.
2. Only use grinding wheels that fit the arbor (7/8"). Do not try to change or modify the mounting hole on a grinding wheel to make it fit.
3. Do not over-tighten the Grinder Lock Cap (#9). Hand tighten it only. Over-tightening may cause the wheel to break or disintegrate.

4. Never use the chain saw sharpener without the Grinding Wheel Cover (#11) in place.
5. Always test the Grinding Wheel (#8) by running it for a minute prior to contact with a chain.
6. Keep away from the wheel when it is turning, and make sure no one is standing close, in the line of the wheel rotation trajectory.
7. If the grinding wheel vibrates, turn off the machine immediately and check that it is mounted securely, and that is not damaged.
8. Never try to stop the grinding wheel with your hands, even if you are wearing safety gloves. The wheel will cut through gloves and your hand, causing serious injury.
9. Never operate tool without the Grinding Wheel Cover in place.
10. Replacement grinding wheel listed speed must meet or exceed RPM rating of the tool.

Warning!: This machine is designed to sharpen chain saw chains. Do not attempt to sharpen any other tools and do not attempt to grind any other objects.

Assembly

1. When installing the sharpener on a workbench, make sure that the lock wheel (#18) (is accessible as shown in the mounting picture in FIGURE 1.
2. Bolt (bolts not included) the unit directly to the workbench through the two 1/4" holes on the base (#17). The workbench must have a solid surface capable of supporting the weight of this sharpener, the work-piece and assorted tools. See FIGURE 2.



Warning ! Always unplug the unit before changing grinding wheels, or when making any adjustments to the Sharpener.

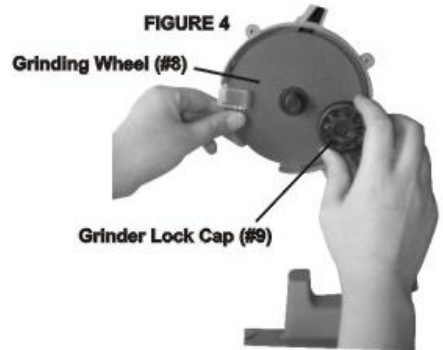
Mounting a Grinding Wheel

Refer to the assembly drawing on page 10 and FIGURE 3 and FIGURE 4 below.

1. Raise the Top Housing (#4) and lock it in the up position by tightening the Lock Stop (# 6)
2. Remove the two screws holding the Grinding Wheel Cover (#11), Set the cover aside.
3. Unscrew the Grinder Lock Cap (#9) that holds the Grinding Wheel (#8) in place.
4. Install the new wheel on the Grinding Wheel Base (#7),making sure it fits properly.

Note : Do not use a grinding wheel if it chipped, cracked, or worn. You can check if the wheel has cracks not visible to the human eye by hanging it up by the central hole and tapping it with a non metal object (ie: screwdriver handle). If it is in good condition it will produce a metallic sound. A dull sound indicates a crack or break.

5. Replace the Grinder lock Cap (#9).
6. Replace the Grinding Wheel Cover (#11).
7. Release the Lock Stop (#6) and lower the Top Housing (#4).
8. Never operate tool without the Grinding Wheel Cover in place.



Operation

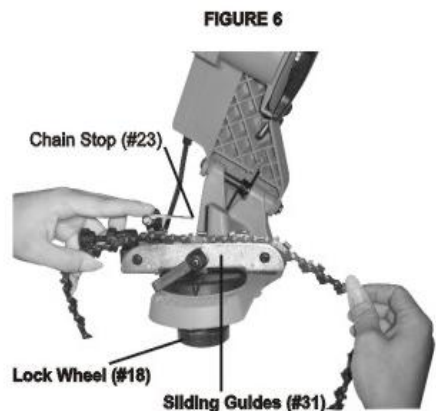
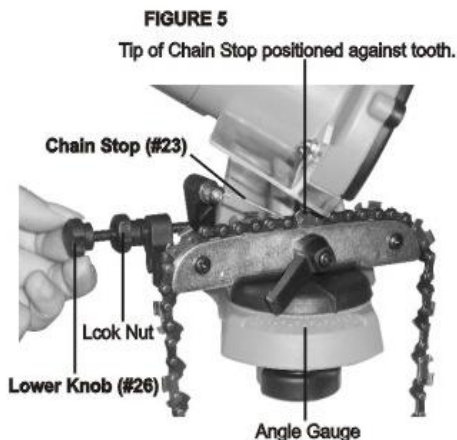
Warning ! Always unplug the unit while adjusting chain to be sharpened. Refer to the assembly drawing on page 10 and the various photographs.

Note: Raise the Top Housing (#4) while adjusting the chain.

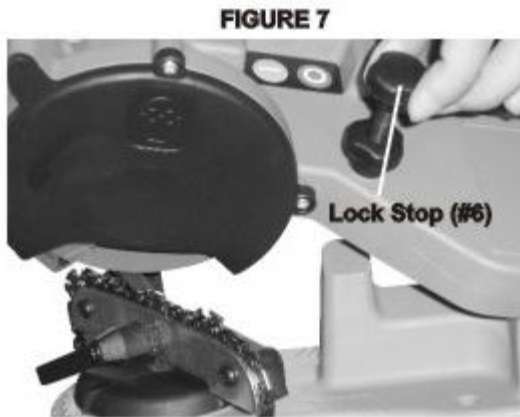
1. Clean the chain before sharpening it. Wash it with a non-flammable solvent. Don't use Gasoline to dry the chain.
2. Lift up the Chain Stop(#23) and secure the chain in the sliding Guides (#31).

See FIGURE 6.

3. Lower the Chain Stop(#23) so that it is positioned on the tooth (blade) you want to start with. **See FIGURE 5.**

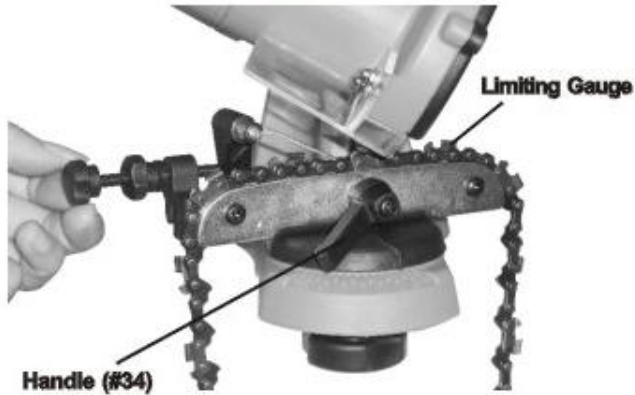


4. **See FIGURES 5&6.** Loosen the LOCK Wheel (#18) to allow entire housing to turn. Rotate the housing to match the degree of angle you need on the Angle Gauge. Chains come in various sizes with varying degrees of sharpening angles. Check with your chain manufacturer's manual to determine what degree you need to sharpen at. Once the degree is set, tighten the Lock Wheel(#18).
5. Lower the Top Housing(#4) so that the Grinding Wheel(#8) skims the chain tooth.
6. Hold it at that position while you Tighten the **Lock Stop(#6)**so that the Wheel will only go down to that point See **FIGURE7.**



7. Depending on the amount of material you wish to remove, tighten or loosen the **Lower Knob(#26)** and set the Lock Nut. See **FIGURE5.**The **Lower Konb (26)** has a Lock Nut, which will determine how much material is removed. Once you set the Lock Nut, fully tighten the **Lower Knob(26).**
8. Lock the chain in the **Sliding Guides (#31)**by turning the **Handle(#34).**See **FIGURE 8.** The **Handle(#34)** should be situated so that you can easily release and tighten it . You will need to release it each time you move to the next link, and tighten it to sharpen each link.

FIGURE 8



9. If the chain has been repeatedly sharpened, the chain depth limiting gauges may need to be taken down with a flat file (not included). See **FIGURES 8&9** . File down each gauge so that they are at a lower level than cutting teeth.

FIGURE 9



Sharpening.

1. Put on your protective gear and make sure the immediate area is clear of bystanders.
2. Plug in the Power Cord(#3) and press the green button on the Switch Plate (#5) to turn on the machine.
3. Slowly lower the grinding wheel as shown in FIGURE10. If you notice slight errors in your settings, turn off the unit and unplug it before you make your adjustments.

Note: A good grind occurs when the contact between the wheel and the teeth are gradual and smooth. Do not stop too long time on each tooth.

4. After sharpening one tooth, turn off the machine. Lift the Top Housing (#4), release the Handle (#34), and move the chain so that the next link is positioned in the Chain Stop(#23). Tighten the Handle (#23). Turn the machine back on and continue sharpening the next tooth. Repeat this process until you have sharpened all of the links set up for this angle.



5. After you finished sharpening all of the teeth on the chain, turn off the machine by pushing the red button on the Switch Plate(#5) and unplug the unit.

6. Loosen the Lock Wheel(#18)and reset the angle so that the first tooth that hasn't been sharpened is positioned against the Chain Stop (#23) and locked in as explained on page 6. See FIGURE 11.

7. As you did with the first half of the chain, be sure to lower the Top Housing(#4) so that the Grinding Wheel (#8) skims the chain tooth, and lock it in place. See page6. Follow all of the steps on page 6 double checking everything before you plug in the machine and turn it on again.

FIGURE 11



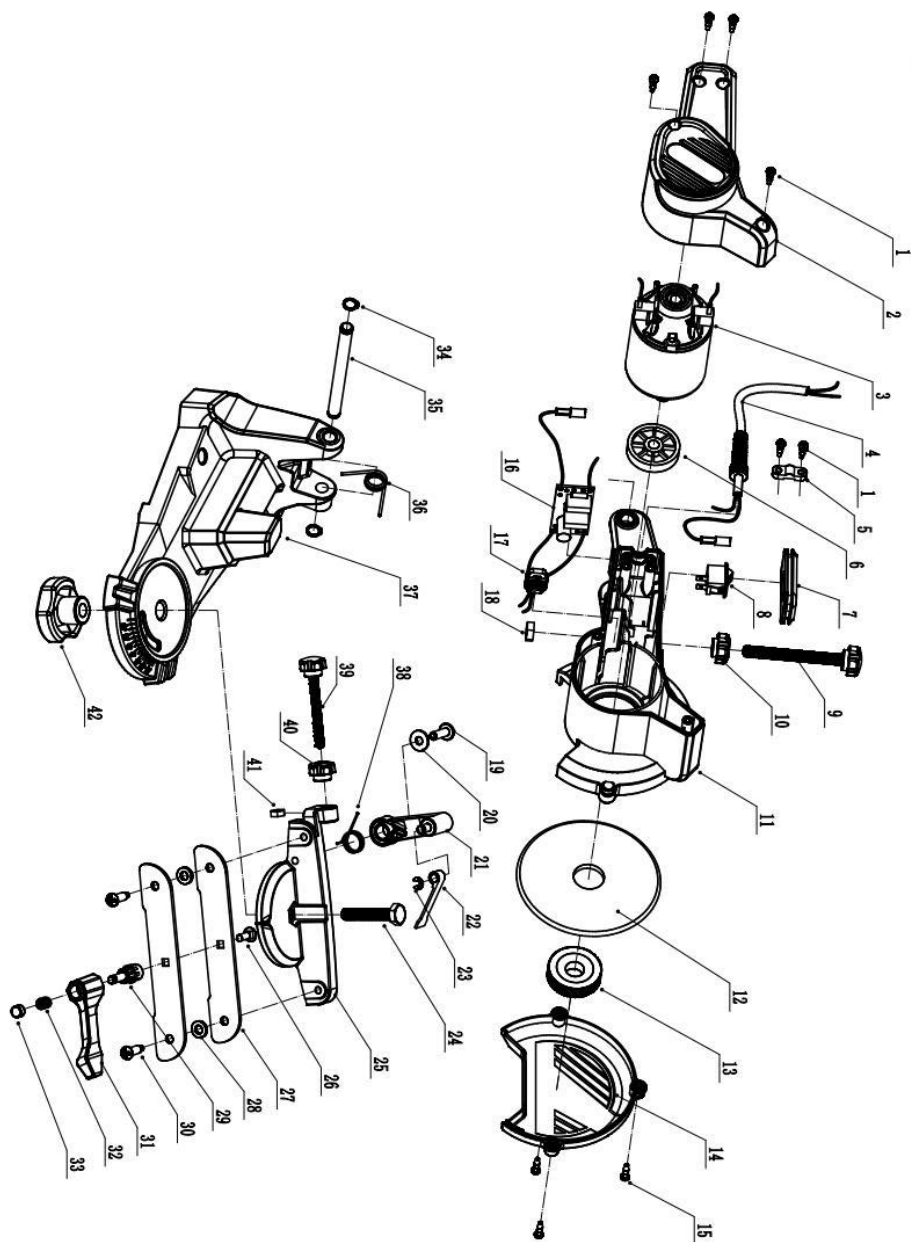
Remember to turn off the machine and unplug it if you need to make any adjustments.

8. After you repeat all of the steps under sharpening on page 7, your chain is ready to be mounted on your saw.

Maintenance

1. Keep the Sharpener clean and free of dust, metal debris and dirt.
2. Check the grinding wheel before each use to make sure it isn't damaged. Do not use a grinding wheel if it is chipped, cracked, or worn. You can check if the wheel has cracks not visible to the human eye by hanging it up by the central hole and tapping it with a non metal object (ie: screwdriver handle). If it is in good condition it will produce a metallic sound. A dull sound indicates a crack or break.
3. Replace the grinding wheel when it grinds down to a diameter of 3 inches.

PARTS LIST



Parts No.	Desc.	Qty	Parts No.	Desc.	Qty
1	Screw	6	22	Chain Stop	1
2	Motor cover	1	23	washer	1
3	Motor	1	24	Screw	1
4	Power cord	1	25	Chain Saw Frame	1
5	Cord Pressing Plate	1	26	Screw	1
6	Grinding Wheel Base	1	27	Sliding Guide	2
7	Switch Plate	1	28	Pad	2
8	Switch	1	29	nut	1
9	Screw	1	30	Screw	2
10	Nut	1	31	Lock handle	1
11	Housing	1	32	Spring	1
12	Wheel	1	33	Lock nut	1
13	Grinding Lock Cap	1	34	washer	2
14	Grinding Wheel Cover	1	35	Punching Axis	1
15	Screw	3	36	Torsion Spring	1
16	PCB	1	37	Base	1
17	Conductor	1	38	Spring	1
18	Nut	1	39	Screw	1
19	Screw	1	40	Nut	1
20	Pad	1	41	Nut	1
21	Swing Arm	1	42	Nut	1

Please read the following carefully:

The manufacture and/or distriibutor has provided the parts diaram in this manual as a reference tool only. neither the manufacturer nor distributor makes any representation or warranty of any kind to the buyer that he or she is qualified to make any repairs to the product or that he or she is qualified to replace any parts of the product. in fact, the manufacturer and/or distributor expressly states that all repairs and parts replacements should be undertaken by certified and licensed technicians and not by the buyer.the buyer assumes all risk and liability arising out of his or her repairs to the original product or replacement parts thereto.or arising out of his or her installation of replacement parts thereto

NOTE: Some parts are listed and shown for illustration purposes only and are not available individually as replacement parts.

Specifications

Voltage	AC120V 60Hz
Rated Power	85Watts
No load Speed	5000RPM
Table/Vise Angles	35 Degrees Right to Left

Manufacturer:Zhejiang JiaHong Tools Manufacture Co., Ltd.

Address:No. 2-1 Xinzhong Dong Road, Xinbi District, Jinyun Town
321400 Lishui, Zhejiang, P.R. China

