

SysM/SysD - Connected Wireless Switch 1-gang/2-gang

Device user guide

Information about features and functionality of the device.

11/2021

Legal Information

The Schneider Electric brand and any trademarks of Schneider Electric SE and its subsidiaries referred to in this guide are the property of Schneider Electric SE or its subsidiaries. All other brands may be trademarks of their respective owners.

This guide and its content are protected under applicable copyright laws and furnished for informational use only. No part of this guide may be reproduced or transmitted in any form or by any means (electronic, mechanical, photocopying, recording, or otherwise), for any purpose, without the prior written permission of Schneider Electric.

Schneider Electric does not grant any right or license for commercial use of the guide or its content, except for a non-exclusive and personal license to consult it on an "as is" basis. Schneider Electric products and equipment should be installed, operated, serviced, and maintained only by qualified personnel.

As standards, specifications, and designs change from time to time, information contained in this guide may be subject to change without notice.

To the extent permitted by applicable law, no responsibility or liability is assumed by Schneider Electric and its subsidiaries for any errors or omissions in the informational content of this material or consequences arising out of or resulting from the use of the information contained herein.

Table of Contents

Safety information	5
SysM/SysD - Connected Wireless Switch 1-gang/2-gang	6
For your safety	6
About the device	7
Installing the device	7
Pairing the device	8
Configuring the device	10
Setting the device location in the room	10
Renaming the device	11
Identifying the device	12
Removing the device from the system	13
Resetting the device	14
Using the device	14
Switching operation	14
Assigning an Action to a Push Button	15
Assigning a Moment to the Push Button	18
Removing configured Action/Moment	20
Replacing the battery	21
LED indications	22
Troubleshooting	22
Technical Data	22

Safety information

Important information

Read these instructions carefully and look at the equipment to become familiar with the device before trying to install, operate, service, or maintain it. The following special messages may appear throughout this manual or on the equipment to warn of potential hazards or to call attention to information that clarifies or simplifies a procedure.



The addition of either symbol to a “Danger” or “Warning” safety label indicates that an electrical hazard exists which will result in personal injury if the instructions are not followed.



This is the safety alert symbol. It is used to alert you to potential personal injury hazards. Obey all safety messages that accompany this symbol to avoid possible injury or death.

⚡ ⚠ DANGER
DANGER indicates a hazardous situation which, if not avoided, will result in death or serious injury. Failure to follow these instructions will result in death or serious injury.
⚠ WARNING
WARNING indicates a hazardous situation which, if not avoided, could result in death or serious injury.
⚠ CAUTION
CAUTION indicates a hazardous situation which, if not avoided, could result in minor or moderate injury.
NOTICE
NOTICE is used to address practices not related to physical injury.

SysM/SysD - Connected Wireless Switch 1-gang/2-gang



MEG5001-0300 (System M)



MEG5001-6000 (System Design)

For your safety

⚠ DANGER

HAZARD OF ELECTRIC SHOCK, EXPLOSION, OR ARC FLASH

While installing the device on a wall box or an existing switch outlet combination, always isolate the 230 V AC cables by applying an adhesive silver foil on the fixing plate.

Failure to follow these instructions will result in death or serious injury.

About the device

The Connected Wireless Switch 1-gang/2-gang (hereinafter referred to as **Wireless Switch/ Free Located Switch**) is a battery-powered wireless push button switch that is used to control a group of Zigbee devices (such as light/shutter) within the same Zigbee network.

The device can be configured through the Wiser Home app.

Advantage of using a Wireless Switch:

- Easy to use and user-friendly interface: also good for children (placed lower on the wall) and for the elderly who may not be so familiar with smart phones.
- Easy to install on the wall: no wiring required.
- Easy to control in places where you wouldn't normally be able to install switches.

Features of a Wireless Switch:

- Using the app, you can add various Actions (such as lighting/shutter control) to the Wireless Switch.
- Using the app, you can add a Moment to the Wireless Switch (such as Movie Night MOMENT/Good Night MOMENT).
- Low battery notification in the app.

NOTE: This device user guide shows pairing, configuration and other features of connected Wireless Switch 2-gang. The same applies for connected Wireless Switch 1-gang.

Installing the device



Refer to the installation instruction supplied with this product.

Pairing the device

Using the Wiser Home app, pair your Wireless Switch with the **Wiser Hub** to access and control the Wireless Switch.

NOTE: You can change the Wireless Switch from 1-gang to 2-gang using the app during commissioning. If the Wireless Switch is already configured to 1-gang and you want to change it to 2-gang, then reset the device (1-gang), refer to [Resetting the device](#), page 14 and commission it again with 2-gang.

Follow the steps below to pair the Wireless Switch:

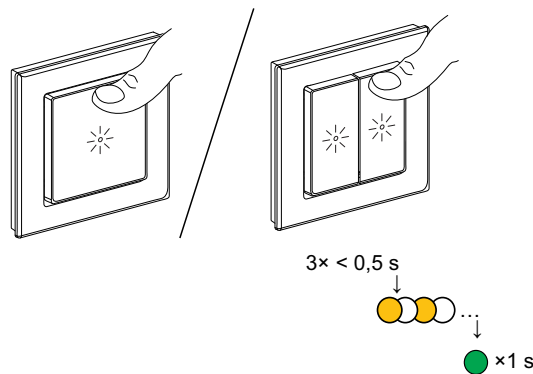
1. On the Home page, tap  icon.
2. Tap **Devices** >  icon and tap **Appliances (tab) > Connected Wireless Switch > Next**.

TIP: The next screen shows the joining process of the **Connected Wireless Switch**.

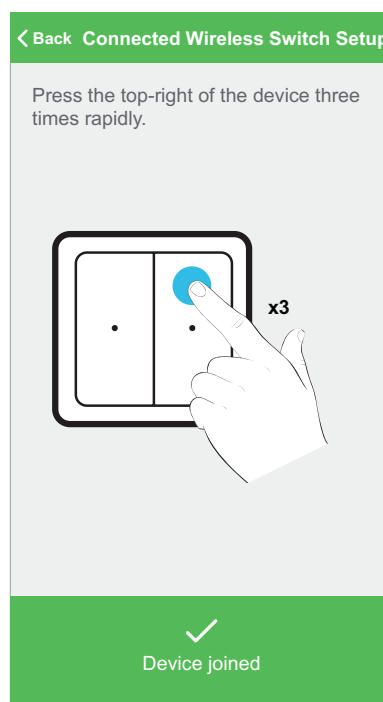
3. On the 2-gang Connected Wireless Switch, press the top-right push button fast three times.

TIP: In case of 1-gang Connected Wireless Switch, press the top-center push button fast three times.

Make sure the LED blinks amber.



Wait for a few seconds until the LED turns green. You can also see in the app that the 2-gang Connected Wireless Switch is joined.



4. Tap **Next** to enter 2-gang Connected Wireless Switch name and assign it to an existing room or a new room.


You can see the added 2-gang Connected Wireless Switch on the Home page under the room tab or under **ALL** devices.

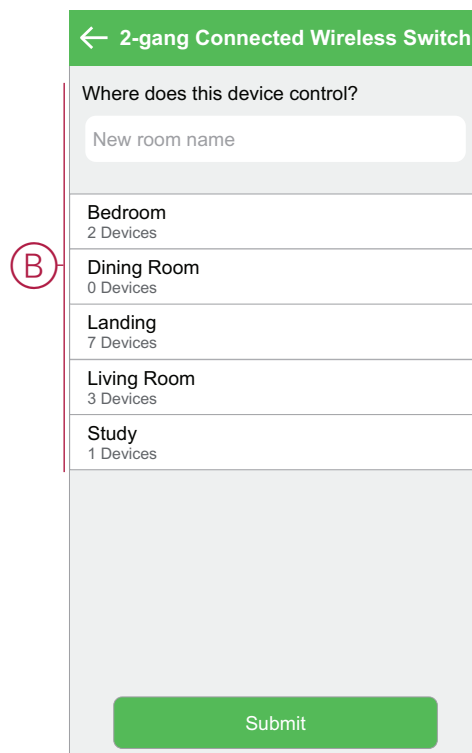
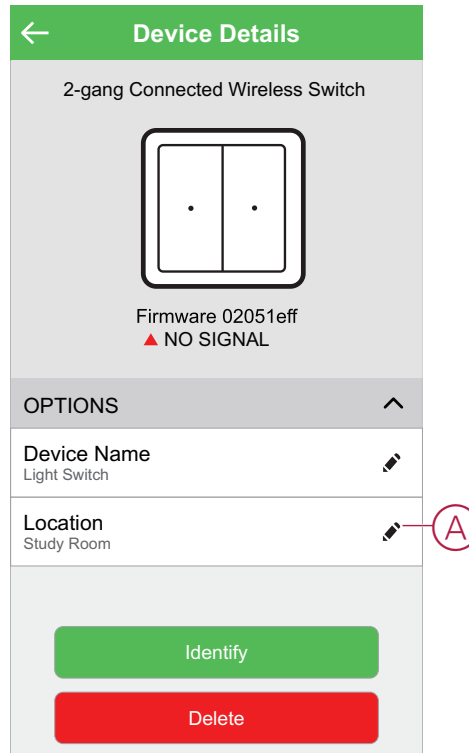
Configuring the device

Setting the device location in the room

Using the Wisier Home app, you can assign your Wireless Switch to any room (such as bedroom, living room, dining room etc.).


Follow the steps to assign a Wireless Switch to a room:

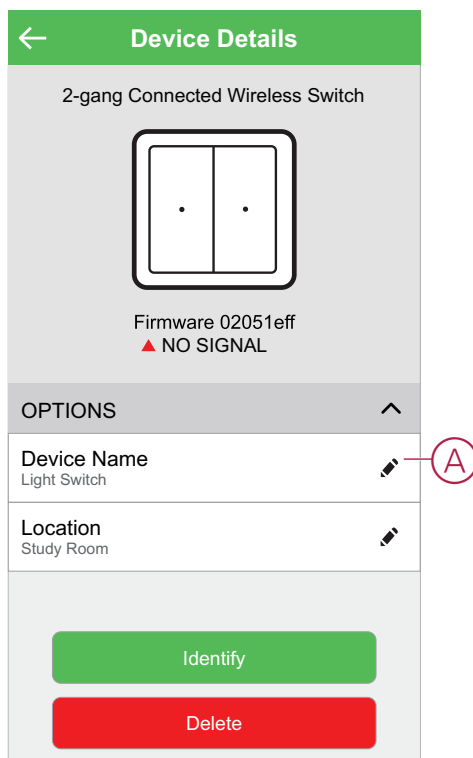
1. On the Home page, tap  icon.
2. Tap **Devices > 2-gang Connected Wireless Switch > Location (A)** to assign the Wireless Switch to the existing room or a new room (B) and tap **Submit**.



Renaming the device

Using the Wiser Home app, you can rename your Wireless Switch. Follow the step to rename the Wireless Switch:

1. On the Home page, tap  icon.
2. Tap **Devices > 2-gang Connected Wireless Switch > Device Name (A)** to rename the Wireless Switch.



Identifying the device

Using the Wiser Home app, you can identify a Wireless Switch from the other available devices in the room.

Follow the steps below to identify the Wireless Switch:

1. Press 3 times on all the Wireless Switch available in the room.

TIP: Pressing 3 times on the Wireless Switch, it wakes up for 1 minute.

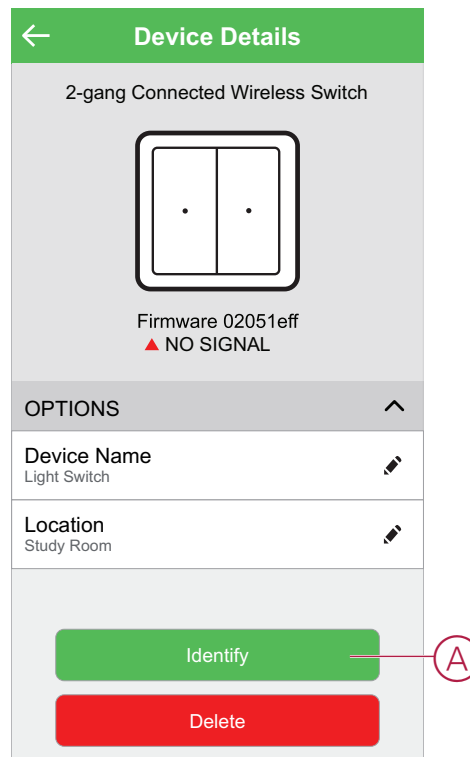
The Wireless Switch LED blinks green 5 times and then stops.

2. Tap  icon **Devices > 2-gang Connected Wireless Switch > Identify (A)** in the app.

NOTE:

- This feature flashes the Wireless Switch LEDs, so you can identify the actual device. It may take up to a minute to start and flash the Wireless Switch LED.
- The Wireless Switch LED will continue to flash until you tap **OK**.


3. Check which Wireless Switch LED starts blinking green.

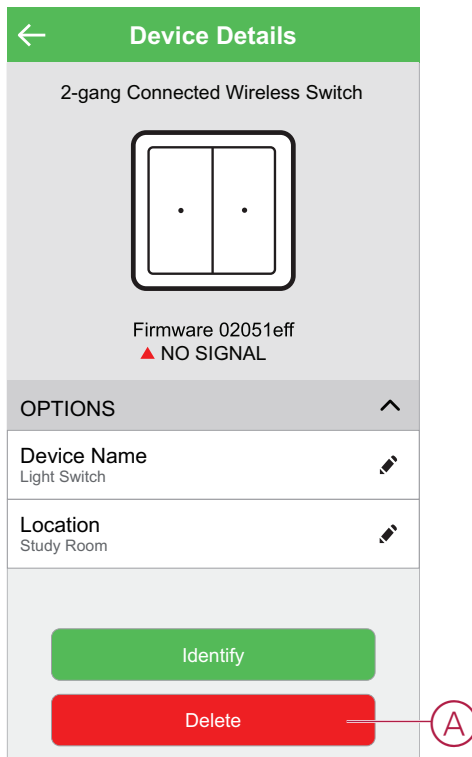


Removing the device from the system

Using the Wiser Home app, you can remove the Wireless Switch from the Wiser system.

Follow the step to remove the Wireless Switch:

1. On the Home page, tap  icon.
2. Tap **Devices > 2-gang Connected Wireless Switch > Delete (A)** and short press the top-right push button 3 times on the **Wireless Switch** to activate the device.



NOTE: By removing the device, you will reset the device. If you still have a problem with the reset, then refer to reset the device, page 14.

Resetting the device

You can reset the Wireless Switch to factory default manually. It can be reset manually at any time, e.g., when the Hub is replaced or when you are changing Wireless Switch from 1-gang to 2-gang or vice versa.

Follow the steps below to reset the Wireless Switch:

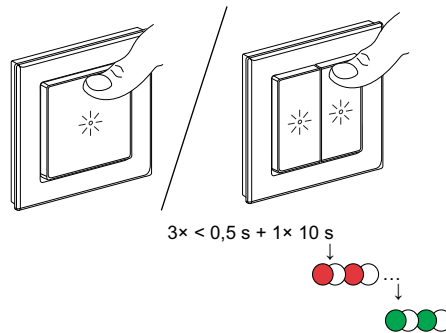
1. Short press the top-right push button three times (< 0.5 s) and then press and hold the push button (> 10 s).

TIP: In case of the 1-gang Wireless Switch, short-press the top-center push button three times (< 0.5 s) and then press and hold the push button (> 10 s).

2. After 10 s, the LED starts blinking red, then release the push button. The LED stops blinking upon successful reset of the device.
3. The Wireless Switch restarts and blinks green for a few seconds.

NOTE:

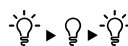
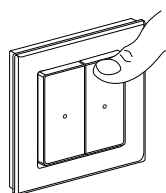
- After reset, the LED turns off to save the battery.
- All configuration data, user data, and network data are deleted.



Using the device

Switching operation

You can operate Wireless Switch by pressing the push button manually.



Light

Short press on the upper/lower part of the push button for switching on or off, long press for dimming up or down.



Shutter

Long press on the upper/lower part of the push button to drive the shutter up or down.



Moment

Short press the push button to activate a Moment.

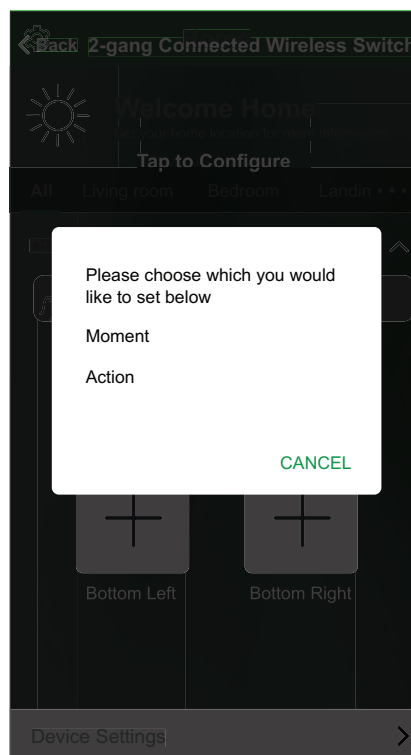
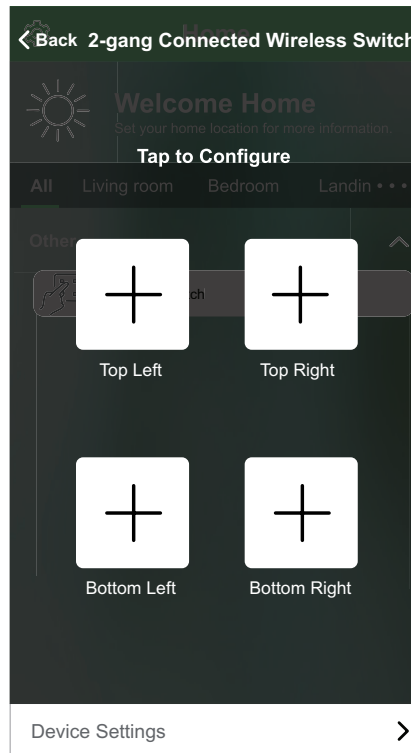
TIP: You can configure Wireless Switch push button with Action/Moment using the app.

Assigning an Action to a Push Button

Using the Wiser Home app, you can configure an "Action" to the Wireless Switch push button (such as switching light On/Off, shutter up or down).

Follow the steps below to configure an Action to the Wireless Switch push button:

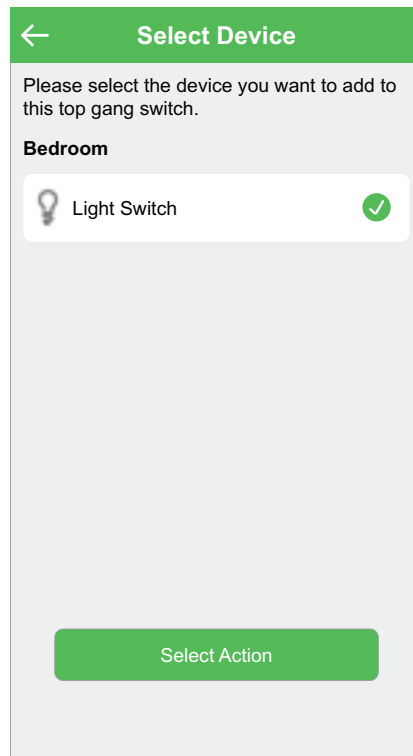
1. On the Home page, tap the Wireless Switch under **All** devices or under the room (tab) where it is located.
2. Tap any below listed switch to configure and select **Action**.




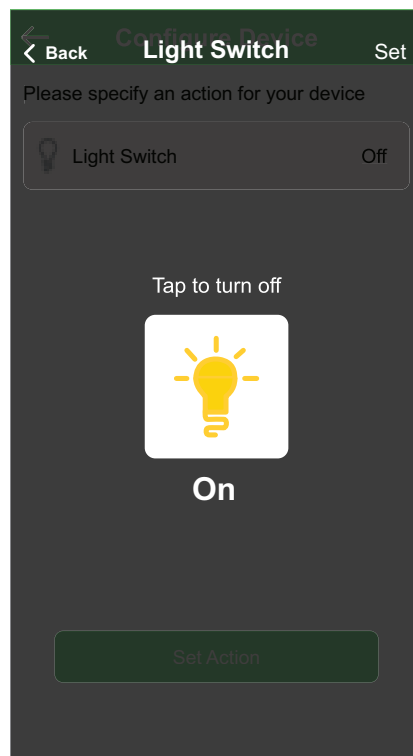
3. Select the device which you want to add as an Action.

For example, the **Top Left** switch push button is configured with Action: Light Switch On.

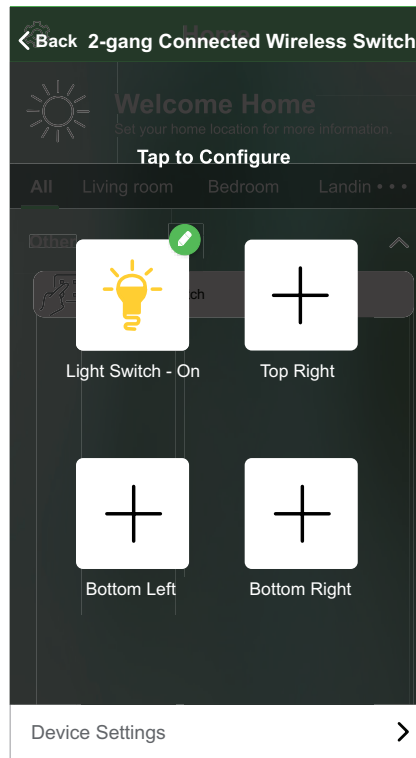
- On the **Select device** page, select the **Light Switch** and tap **Select Action**.



- Tap  icon to turn On the light and tap **Set > Set Action**.



TIP: In the next screen, ✓ shows the Action is successfully configured. You can see the Top Left switch push button is configured with Light Switch: On.

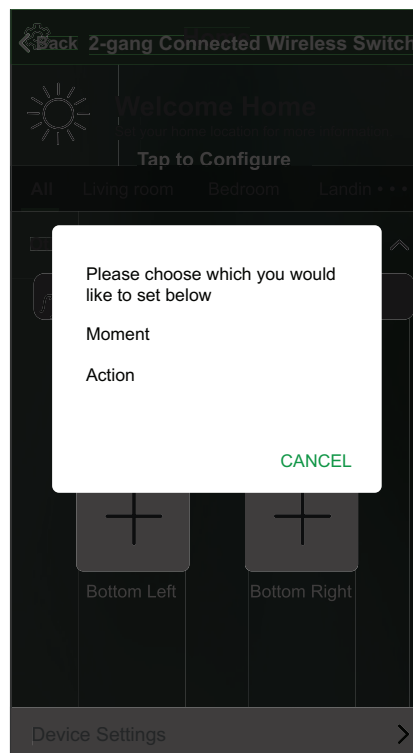
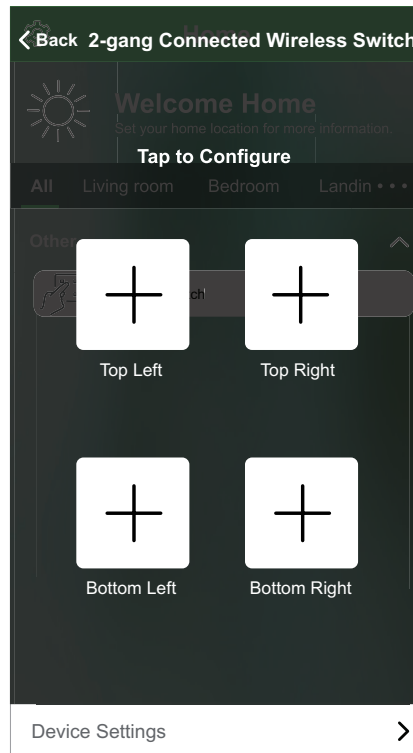


Assigning a Moment to the Push Button

Using the Wiser Home app, you can configure a Moment to the Wireless Switch push buttons (such as Good Night Moment: Fan on, light dimming 50%, shutter close).

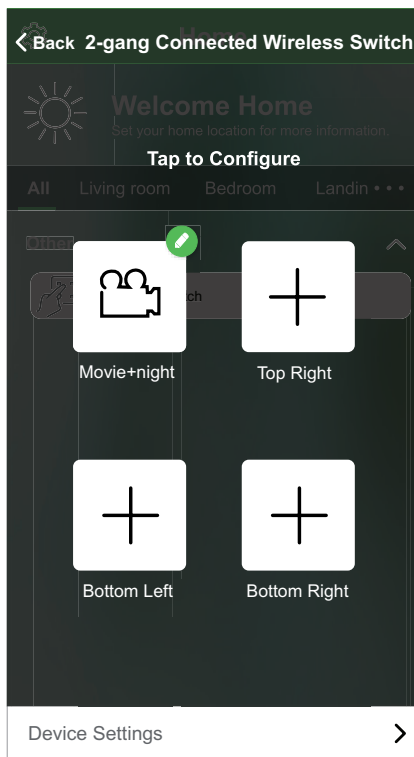
Follow the steps below to configure a Moment to the Wireless Switch push button:

1. On the Home page, tap the Wireless Switch under **All** devices or under the room (tab) where it is located.
2. Tap any below listed switch and select **Moment**.



3. Select a Moment which you want to add to the push button and tap **Select Moment**.

TIP: In the next screen, ✓ shows the Moment is successfully configured. For example, the **Top Left switch** is configured with Moment: Movie Night.

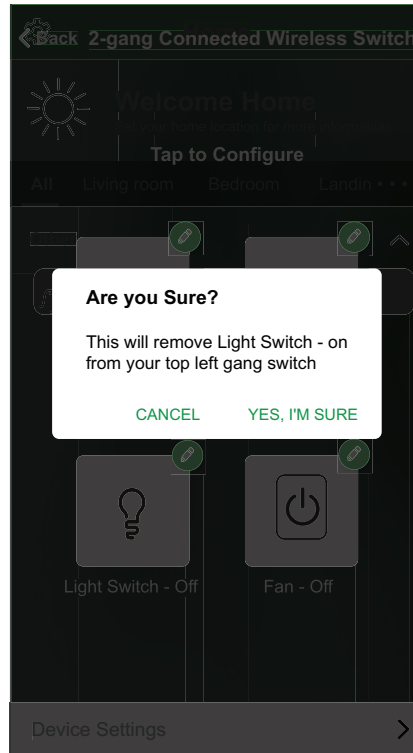


Removing configured Action/Moment

Using the Wiser Home app, you can remove the existing configured Action or Moment from the Wireless Switch push-button.

Follow the steps below to remove the configured Action/Moment:

1. On the Home page, tap the Wireless Switch under **All** devices or under the room (tab) where it is located.
2. Tap push button and tap **Action / Moment >Remove > Yes I'm confirm** to remove configured Action/Moment from the Wireless Switch push button.



Replacing the battery

Replace the device battery when the level is low or critically low. The battery level can be seen in the app.

Follow the steps to replace the battery from the device:

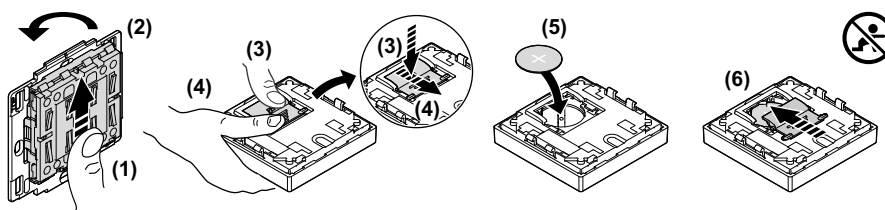
⚠ WARNING
<p>CHEMICAL BURN HAZARD</p> <p>Keep batteries out of reach of children. If swallowed, seek immediate medical attention.</p> <p>Failure to follow these instructions can result in death, serious injury, or equipment damage.</p>

NOTICE
<p>EQUIPMENT DAMAGE</p> <p>The module is locked on the fixing plate with retaining claws. Never pull the module before sliding it upwards.</p> <p>Failure to follow these instructions can result in equipment damage.</p>

1. Remove the module from the fixing plate by sliding it upwards.
2. Rotate the module by 180° to access the battery cover.
3. Press and hold the battery cover with your thumb.
4. Slide the battery cover with another thumb to remove.
5. Remove the old battery and press any push button on the device for a few seconds.



NOTE: Dispose the used batteries, as per statutory regulations.

6. Insert a new battery with plus (+) symbol facing outward.
7. Secure the battery cover.





LED indications


Pairing the device

User Action	LED Indication	Status
Press the push button 3 times	LED blinks orange, once per second. 	Pairing mode is active for 30 seconds. When pairing is completed, LED displays solid green for a few seconds, before turning Off. 

Resetting the device

User Action	LED Indication	Status
Press the push button 3 times and hold it down once for > 10 s.	LED blinks red, once per second. 	The device is in reset mode. The device then restarts and the LED starts blinking green, before turning Off. 

Battery level

LED Indication	Status
LED blinks red once, when a push button is pressed. 	The battery is low (< 10%), Replace the Wireless Switch battery, page 21. NOTE: A notification pop-up will appear on the app.

Troubleshooting

Symptom	Possible cause	Solution
LED blinks red.	The Wireless Switch battery is low or drained.	Replace the Wireless Switch battery, page 21. NOTE: A notification pop-up will appear on the app.
The Wireless Switch displays offline in the app.	The Wireless Switch battery is low or drained.	Replace the Wireless Switch battery, page 21.
	The Wireless Switch is disconnected from the network.	Press any push button on the Wireless Switch. NOTE: The first press does not trigger Wireless Switch operation.

Technical Data

Battery	CR2032
Battery life	Up to 5 years (depending on frequency of use and quality of battery)
IP rating	IP20
Operating frequency	2405-2480 MHz
Max. radio-frequency power transmitted	<10 mW
Range	100 m open space
Operating temperature	-5 °C to 45 °C
Relative humidity	5% to 95%
Communication protocol	Zigbee 3.0

Compliance

Compliance information for Green Premium products

Find and download comprehensive information about Green Premium products, including RoHS compliance and REACH declarations as well as Product Environmental Profile (PEP) and End-of-Life instructions (EOLI).

General information about Green Premium products

Click the link below to read about Schneider Electric's Green Premium product strategy.

<https://www.schneider-electric.com/en/work/support/green-premium/>

Find compliance information for a Green Premium product

Click the link below to search for a product's compliance information (RoHS, REACH, PEP and EOLI).

NOTE: You will need the product reference number or product range to perform the search.

<https://www.reach.schneider-electric.com/CheckProduct.aspx?cskey=ot7n66yt63o1xblflyfj>

Trademarks

This guide makes reference to system and brand names that are trademarks of their relevant owners.

- Zigbee is a trademark of the Connectivity Standard Alliance™.
- Apple® and App Store® are brand names or registered trademarks of Apple Inc.
- Google Play™ Store and Android™ are brand names or registered trademarks of Google Inc.
- Wi-Fi® is a registered trademark of Wi-Fi Alliance®.
- Wiser™ is a trademark and the property of Schneider Electric, its subsidiaries and affiliated companies.

Other brands and registered trademarks are the property of their respective owners.

Schneider Electric
35 rue Joseph Monier
92500 Rueil Malmaison
France

+ 33 (0) 1 41 29 70 00

www.se.com

As standards, specifications, and design change from time to time,
please ask for confirmation of the information given in this publication.

© 2021 – Schneider Electric. All rights reserved.

Device user guide_00