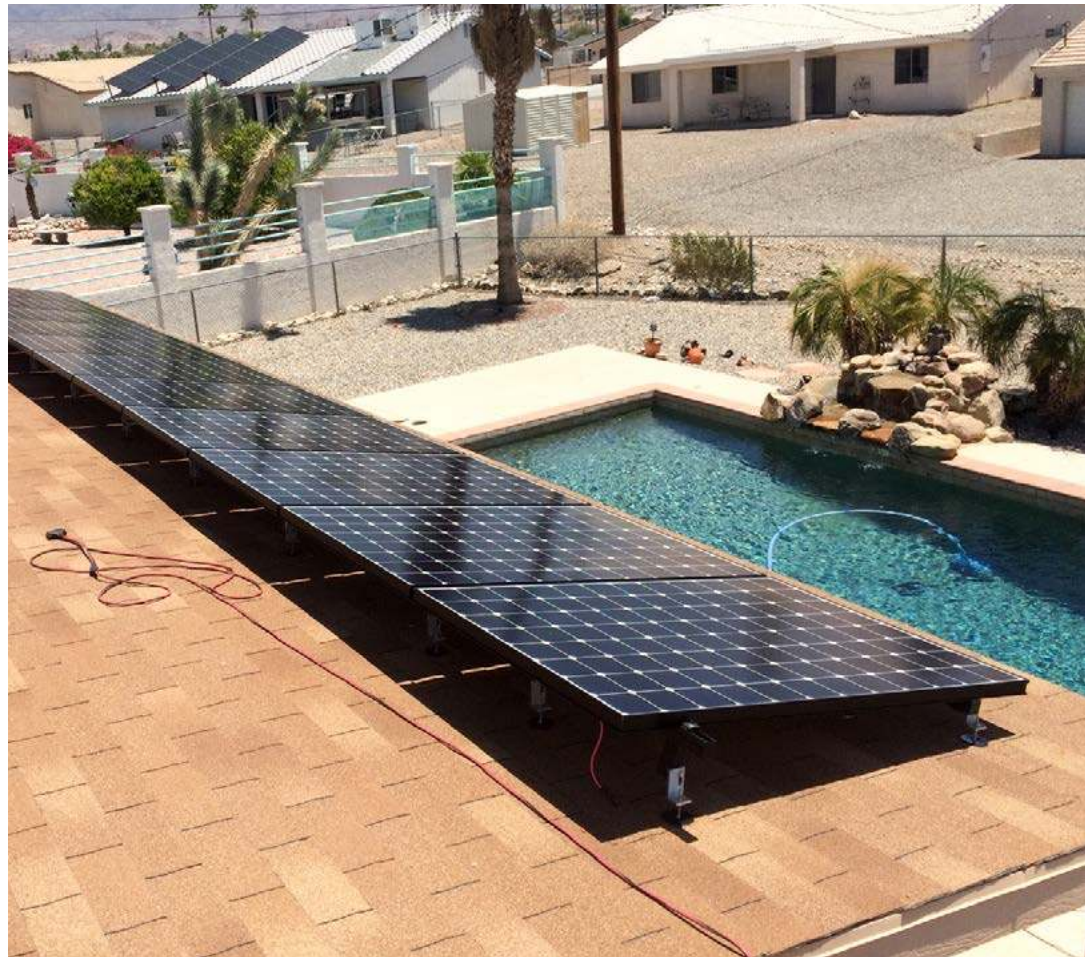


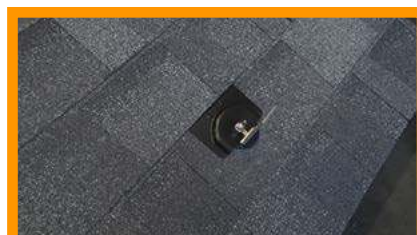
17667DF

LOW PROFILE QB1 WITH 3" MICROFLASHING® & MINIFLASHING®
FOR ASPHALT, EPDM, & TPO ROOFS
PATENT # 8448407



A DIVISION OF QUICKSCREWS INTERNATIONAL CORP

INSTALL INSTRUCTIONS



RECOMMENDED MATERIALS

- Rafter locator
- Chalk or a crayon
- Drill with a 3/16" drill bit
- M6 deep socket hex driver
- Tool for separating shingles
- 1/2" wrench
- NO SEALANT REQUIRED

INSTALLATION INSTRUCTIONS

After locating the rafter and predrilling the hole

1. Place a ring of sealant around the bottom of the Microflashing® washer
2. Place the Microflashing® over the predrilled hole
3. Drive the bolt until it compresses the Microflashing®
4. Place the L-Foot and Nut
5. Insert the Miniflashing® under the shingles
6. Tighten the Nut to secure the Miniflashing®