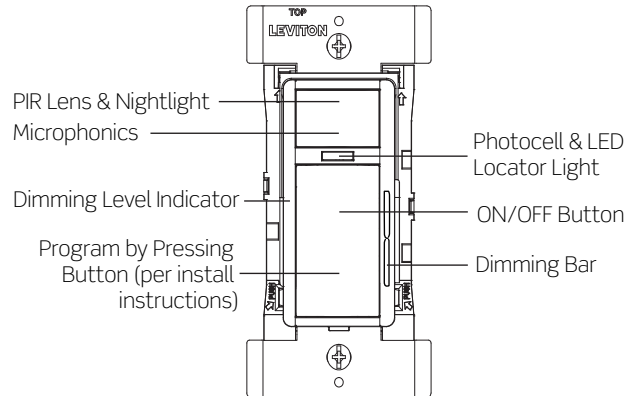


# Smart Multi-Tech 0-10V Dimming Wallbox Sensor



## Description

The Leviton Smart Dimming Wallbox Sensor (ODDMT-MDx) is designed for use with 0-10V ballasts and uses Passive Infrared (PIR) detection and Microphonics technology to monitor a room for occupancy. The PIR sensor uses a specialized segmented and tamper resistant lens that divides the field-of-view into sensor zones. When a person passes in or out of a sensor zone the sensor detects motion and switches the lights ON. The lights will remain ON as long as an occupant moves through the sensor zones and will turn off when the space becomes vacant and after the timeout expires. The ODDMT also utilizes Microphonic technology that “listens” for human activity in the space and will keep the lights ON when motion is detected. Microphonics does not require direct line of sight and can pick up human activity behind obstructions that PIR-only devices are unable to detect. The ODDMT features a vacancy mode for manual-ON/auto-OFF operation, ideal for installations where manual-ON switching is required for energy code applications. Lighting levels can be adjusted using the dimming bar next to the switch.

A “minor motion” zone detects small body movements. This detection allows the lights to remain ON when individuals in the space are more stationary. The “major motion” zone exhibits a lesser degree of sensitivity requiring larger movements.

Configuration of the ODDMT is made using the Leviton Smart Sensor App from a smartphone or other Bluetooth®-enabled Android or iOS device. Simple configuration can also be applied using pushbutton setup for several popular pre-configured options. The ODDMT integrates a photocell for daylighting hold-OFF which can be programmed using the Leviton Smart Sensor App.

## Applications

- Office
- Small Lobbies
- Meeting Rooms
- Bathrooms/Restrooms
- Conference Rooms

## Features

- Can be used to comply with ASHRAE 90.1, IECC and 2022 Title 24, Part 6 occupancy/vacancy sensing, dimming, and manual-ON/auto-OFF requirements
- Fits in a standard wallbox and gangable with other units
- Controls LED lighting loads up to 8A
- One relay module for single-level switching
- 180° field-of-view provides approximately 1,100 square feet of coverage
- Latest PIR technology accurately detects minor motion up to 400sq ft and major motion up to 1,100 sq ft
- Maximum sensing distance in front of the sensor is 30-40 feet and 15-20 feet on either side
- Microphonics technology able to detect minor human activity and does not require direct line-of-sight
- Integrated photocell for daylighting hold-OFF
- Tamper resistant PIR lens
- Use the Leviton Push to Pair (P2P) process to create a multi-way system for up to 5 devices
- Antimicrobial treated faceplate and wallplate available
- Advanced configuration can be performed using the Leviton Smart Sensor App on any Bluetooth-enabled Android or iOS device:
  - Set operating mode to Occupancy (Auto-ON/Auto-OFF) or Vacancy (manual-ON/auto-OFF)
  - Adjust sensitivity and timeouts
  - Set up partial-ON and partial-OFF levels and partial-OFF timeouts
  - Enable the integrated photocell for daylighting hold-OFF and select target daylighting hold-OFF levels
  - Create custom templates for easy multi-room replication of sensor settings
  - Activate the nightlight and select nightlight color
  - Set a security code to lock configuration settings
- Out-of-the-box configuration default mode:
  - Auto-ON/Auto-OFF with 20-minute time out
  - Sensitivity set to 75%
  - Nightlight and daylighting disabled

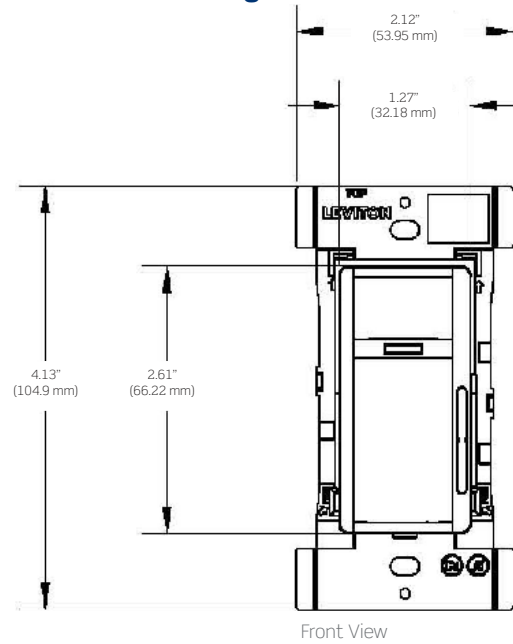
## Features (continued)

- Convenient pushbutton hold configuration for installers without a smart device\*:

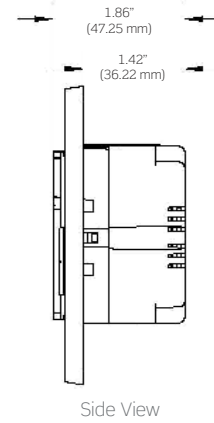
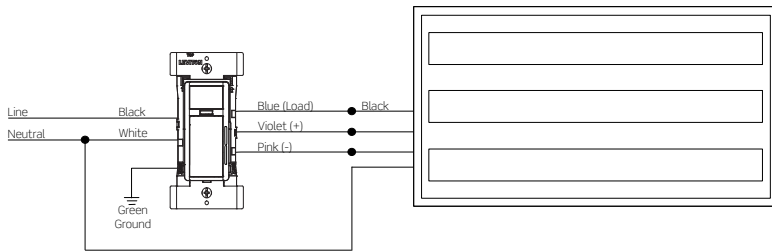
Pushbutton Hold Configuration				
Button (#)	Operating Mode	PIR Sensitivity (%)	Microphonics Sensitivity (%)	Time Out (mins)
1	Auto-ON/ Auto-OFF	75	75	20
2			10	
3			OFF	20
4		50		
5		75		
6		100	100	
7	Manual-ON/ Auto-OFF	75	75	10
8			OFF	20
9			50	
10		75		
11		100		
12		100		

\*Requires removal of front face cover

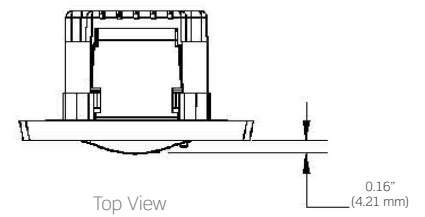
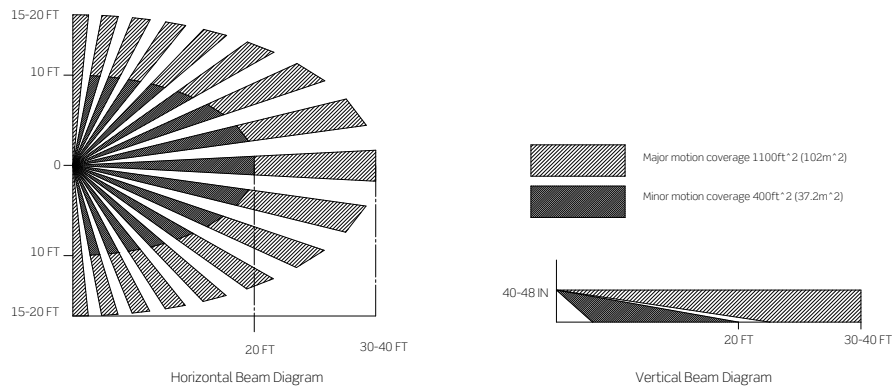
## Dimensions Diagram



## Wiring Diagrams—ODDMT-MDW



## Field of View Diagram



## Specifications

<b>Electrical</b>	
Input Voltage/Frequency	120-277VAC, 50/60Hz
Input Current	
120V	Standby: 0.2W; Max: 0.5W+Load Current
277V	Standby: 0.3W; Max: 0.6W+Load Current
Load Ratings	
General Purpose @ 120V	10A
General Purpose @ 277V	10A
LED/Electronic Ballast @ 120V	8A
LED/Electronic Ballast @ 277V	5A
Standard Ballast @ 120V	10A
Standard Ballast @ 277V	
Tungsten @ 120V	6.67A
Tungsten @ 277V	
Motor @ 120V	1/4HP (FLA 5.8A)
Motor @ 277V	1/3HP (FLA 3.0A)
IP Rating	IP20
Network Connections	BLE 4.2, BLE 5.0
<b>Environmental</b>	
Operating Temperature	32 to 104°F (0 to 40°C)
Storage Temperature	-40 to 185°F (-40 to 85°C)
<b>Physical</b>	
Dimensions	4.13" x 2.12" x 1.86" (104.90mm x 53.95mm x 47.25mm)
<b>Other</b>	
Energy Codes	Can be used to comply with ASHRAE 90.1, IECC and 2022 Title 24, Part 6 occupancy/vacancy sensing, dimming, and manual-ON/auto-OFF requirements
Listings	IECC, UL and cUL listed; JIS Z 2801:2000
Certifications	FCC, ICC
Warranty	Limited five-year warranty

## Ordering Information

Smart Wallbox Sensors	
Cat. No.	Description
ODDMT-MDW	Smart Multi-Tech 0-10V Dimming Wallbox Sensor, App configurable; Auto-ON/Auto-OFF or manual-ON/auto-OFF, neutral wire required, 120/208/220/230/240/277VAC, 50/60Hz; White
ODDMT-MDI	Smart Multi-Tech 0-10V Dimming Wallbox Sensor, App configurable; Auto-ON/Auto-OFF or manual-ON/auto-OFF, neutral wire required, 120/208/220/230/240/277VAC, 50/60Hz; Ivory
ODDKT-00E	Smart Dimming Wallbox Sensor Color Change Kit, Black
ODDKT-00R	Smart Dimming Wallbox Sensor Color Change Kit, Red
ODDKT-00G	Smart Dimming Wallbox Sensor Color Change Kit, Gray
ODDKT-00I	Smart Dimming Wallbox Sensor Color Change Kit, Ivory
ODDKT-00T	Smart Dimming Wallbox Sensor Color Change Kit, Light Almond
ODDKT-00W	Smart Dimming Wallbox Sensor Color Change Kit, White

**Note:** Wallplate sold separately.

### Leviton Manufacturing Co., Inc. Lighting & Controls

10385 SW Avery St Tualatin, OR 97062 **tel** 800-736-6682 **tech line** (6:00AM-4:00PM PT Mon-Fri) 800-959-6004

### Leviton Manufacturing Co., Inc. Global Headquarters

201 North Service Road, Melville, NY 11747-3138 **tel** 800-323-8920 **tech line** (8:00AM-10:00PM ET Mon-Fri, 9:00AM-7:00PM ET Sat, 9:00AM-5:00PM ET Sun) 800-824-3005

Visit our Website at: [www.leviton.com/smartsensors](http://www.leviton.com/smartsensors)

©2023 Leviton Manufacturing Co., Inc. All rights reserved. Subject to change without notice.

LES-G-10663/L23-mm