

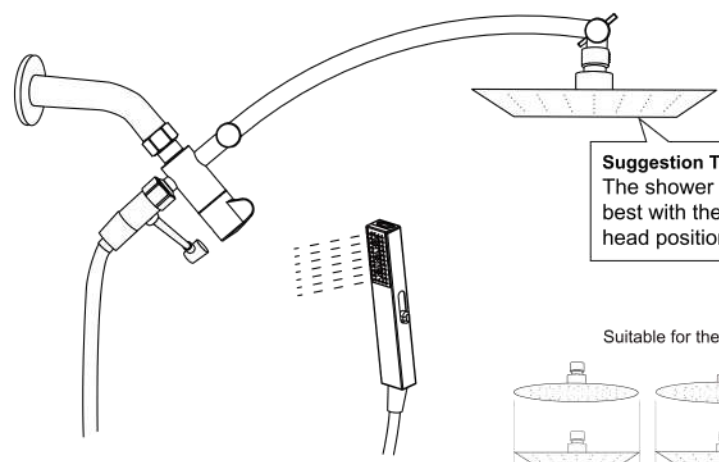
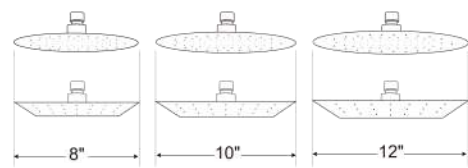
Installation Guide



Not Recommended:
It is not recommended to tilt the showerhead as it can lead to water collecting together below.

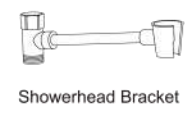
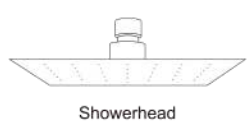
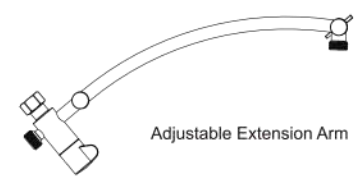
Suggestion Tip:
The shower experience is best with the rain shower head positioned horizontally.

Suitable for these shower heads



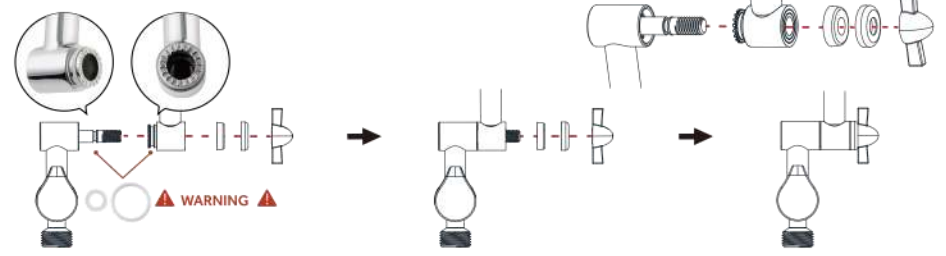
Please check the manual step by step carefully before you install it.
Thanks for your patience.

NAMES AND FUNCTIONS OF PARTS

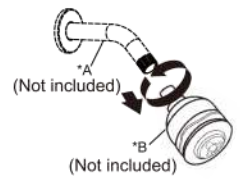


Special Instructions:
1. If you discover a missing part in the box, it may have been lost during Shipping & Delivery. Kindly reach out to us to have the part reshipped.
2. In case a part is malfunctioning or damaged during installation, please contact us for a replacement part. Do not return the entire showerhead combo set to the warehouse without contacting us first for a replacement. The warehouse may dispose of the unsellable product if it has been installed, and at times, they may resend it to a new customer to result in a negative shopping experience. This situation is beyond our control and not our intention. Please contact us to resolve or replace the part. We appreciate your understanding.

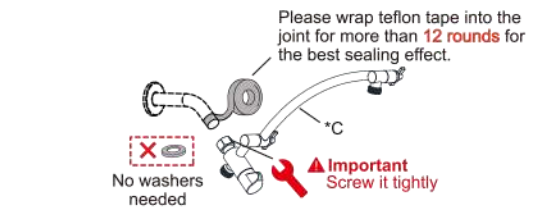
INSTALLATION



An additional o-ring is included for replacement if you find it is leaking.

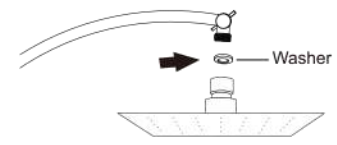


1. Unthread old showerhead (B)* from shower arm (A)*. Use a wrench if necessary.
▲ Most customers have the original shower arm on the wall, so our accessories package doesn't include it. If you have a new house to install the shower combo, you need to purchase the shower arm separately or contact us to get one.

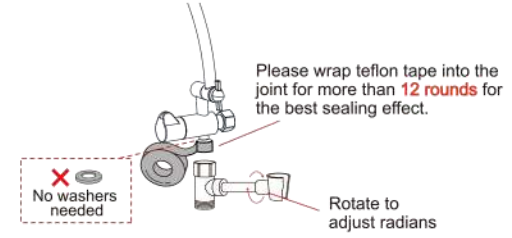


Please wrap teflon tape into the joint for more than 12 rounds for the best sealing effect.
▲ Important Screw it tightly
No washers needed

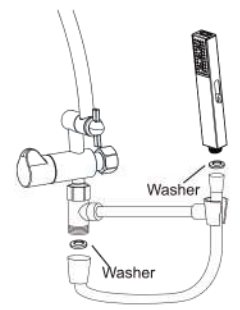
2. Attach the extension arm (C)* to the shower arm without using any washers. Wrap an adequate amount of teflon tape around the connection. Once installed, verify that it can be adjusted to the desired position. Securely fasten it by tightening the screw to ensure it is fixed in place. Utilize the wrench to tighten the nuts on the bolts and confirm that everything is properly fixed.



3. Install the showerhead, and don't forget to put the washer. Adjust the shower angle to get a comfortable showering angle.



4. Install the Showerhead bracket.
Please wrap teflon tape into the joint for more than 12 rounds for the best sealing effect.
No washers needed
Rotate to adjust radians



5. Install the flexible shower hose, don't forget the washer.

4-Setting Modes

Push the switch by hand to switch 4 functions:
① Water Saving
② Power Mist
③ Rain Spray
④ Power Wash

▲ When using powerful wash mode, please do not direct it towards the eyes.

