

**READ BEFORE USE**  
**LIRE AVANT UTILISATION**  
**LEA ANTES DE USAR**

Visit [www.hamiltonbeach.com](http://www.hamiltonbeach.com) for our complete line of products and Use and Care Guides – as well as delicious recipes, tips, and to register your product online!

Rendez-vous sur [www.hamiltonbeach.ca](http://www.hamiltonbeach.ca) pour notre liste complète de produits et de nos manuels utilisateur – ainsi que nos délicieuses recettes et nos conseils !

¡Visite [www.hamiltonbeach.com](http://www.hamiltonbeach.com) (EE. UU.) o [www.hamiltonbeach.com.mx](http://www.hamiltonbeach.com.mx) (México) para ver otros productos de Hamilton Beach o para contactarnos!

**Questions?**  
Please call us – our friendly associates are ready to help.  
USA: 1.800.851.8900

**Questions ?**  
N'hésitez pas à nous appeler – nos associés s'empresseront de vous aider.  
CAN : 1.800.267.2826

**¿Preguntas?**  
Por favor llámenos – nuestros amables representantes están listos para ayudar.  
EE. UU.: 1.800.851.8900  
MEX: 01 800 71 16 100  
*Le invitamos a leer cuidadosamente este instructivo antes de usar su aparato.*

# Hamilton Beach®



## 2-Way FlexBrew® Coffeemaker Cafetière à double usage FlexBrew<sup>MD</sup> Cafetera Doble FlexBrew®

|               |    |
|---------------|----|
| English ..... | 2  |
| Français..... | 17 |
| Español ..... | 33 |

## IMPORTANT SAFEGUARDS

When using electrical appliances, basic safety precautions should always be followed to reduce the risk of fire, electric shock, and/or injury to persons, including the following:

1. Read all instructions.
2. This appliance is not intended for use by persons (including children) with reduced physical, sensory, or mental capabilities, or lack of experience and knowledge, unless they are closely supervised and instructed concerning use of the appliance by a person responsible for their safety.
3. Close supervision is necessary when any appliance is used by or near children. Children should be supervised to ensure that they do not play with the appliance.
4. Do not touch hot surfaces. Use handles or knobs. Care must be taken, as burns can occur from touching hot parts or from spilled, hot liquid.
5. To protect against electric shock, do not place cord, plug, or coffeemaker in water or other liquid.
6. Unplug from outlet when either the coffeemaker or clock is not in use and before cleaning. Allow to cool before putting on or taking off parts and before cleaning the appliance.
7. Coffeemaker must be operated on a flat surface away from the edge of counter to prevent accidental tipping.
8. Do not operate any appliance with a damaged cord or plug, or after the appliance malfunctions or is dropped or damaged in any manner. Call our toll-free customer service number for information on examination, repair, or adjustment.
9. The use of accessory attachments not recommended by the appliance manufacturer may cause injuries.
10. Do not use outdoors.
11. Do not let cord hang over edge of table or counter or touch hot surfaces, including stove.
12. Do not place coffeemaker on or near a hot gas or electric burner or in a heated oven.
13. The carafe is designed for use with this coffeemaker. It must never be used on a range top or in a microwave oven.
14. Do not set a hot carafe on a wet or cold surface.
15. Do not use a cracked carafe or one with loose or weakened handle.
16. Do not clean carafe with cleansers, steel wool pads, or other abrasive materials.
17. Be certain carafe lid is securely in place during brew cycle and when pouring coffee. Do not use force when placing lid on carafe.
18. To disconnect coffeemaker, turn controls to OFF (O) and then remove plug from wall outlet.
19. **WARNING!** To reduce the risk of fire or electric shock, do not remove the bottom cover. No user-serviceable parts are inside. Repair should be done by authorized service personnel only.
20. Do not use appliance for other than intended use.
21. **CAUTION!** Cut Hazard: Removable single-serve pack holder contains a sharp blade. Use caution when handling.
22. **CAUTION!** Cut Hazard: Piercing nozzle is sharp. Use caution when cleaning.

## SAVE THESE INSTRUCTIONS!

### **Other Consumer Safety Information**

**This appliance is intended for household use only.**

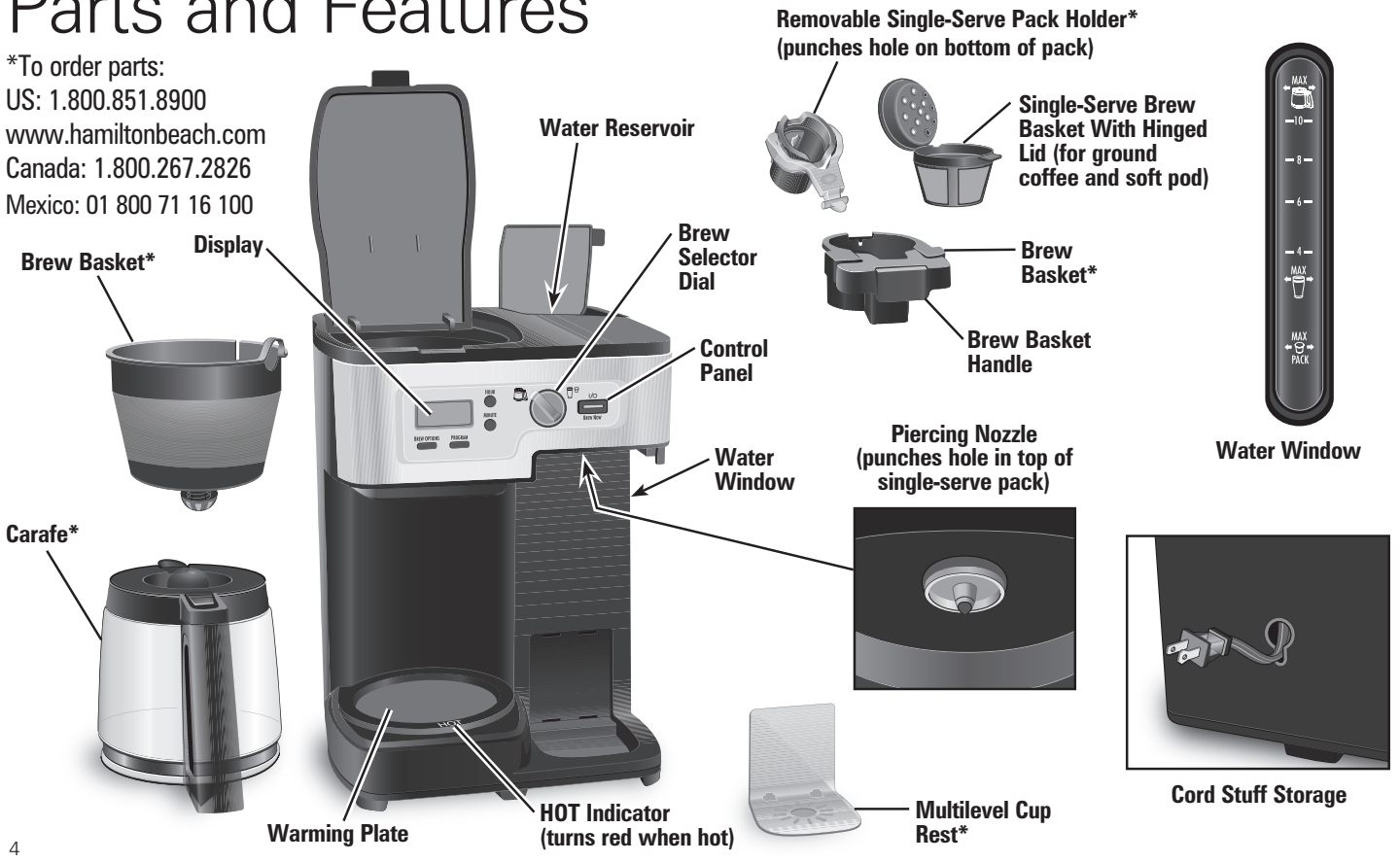
**WARNING!** Shock Hazard: This appliance has a polarized plug (one wide blade) that reduces the risk of electric shock. The plug fits only one way into a polarized outlet. Do not defeat the safety purpose of the plug by modifying the plug in any way or by using an adapter. If the plug does not fit fully into the outlet, reverse the plug. If it still does not fit, have an electrician replace the outlet.

The length of the cord used on this appliance was selected to reduce the hazards of becoming tangled in or tripping over a longer cord. If a longer cord is necessary, an approved extension cord may be used. The electrical rating of the extension cord must be equal to or greater than the rating of the appliance. Care must be taken to arrange the extension cord so that it will not drape over the countertop or tabletop where it can be pulled on by children or accidentally tripped over.

To avoid an electrical circuit overload, do not use another high-wattage appliance on the same circuit with your appliance.

# Parts and Features

\*To order parts:  
 US: 1.800.851.8900  
 www.hamiltonbeach.com  
 Canada: 1.800.267.2826  
 Mexico: 01 800 71 16 100



# How to Use Single-Serve Side – Brewing Single-Serve Packs

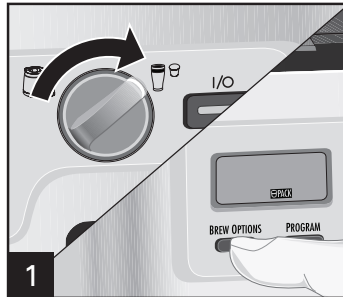
## **⚠ WARNING** Burn Hazard.

To avoid contact with hot coffee or water:

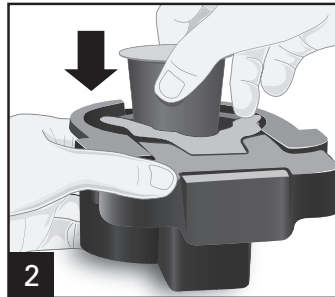
- Do not use more than 10 oz. (300 ml) of water for a single-serve pack. Adding too much water to the water reservoir will cause an error message to appear in the display, along with a long beep. Place carafe on warming plate. Turn brew selector dial to Carafe (☕) and push **BREW NOW** button to remove water. Wait for 3 beeps and blue power light to turn off. Restart the Single-Serve process.
- Fill reservoir with cup or travel mug of water into which the coffee will be brewed.
- Fully insert cup or travel mug under brew basket.
- For best results, use K-Cup®\* packs.

## **NOTES:**

- The unit will only brew on one side at a time.
- For Hotter Coffee: Rinse the mug with hot water before brewing.
- The Brew Mode selection will stay in the last mode used, unless unplugged.
- Coffee may continue to drip after brewing is complete (after 3 beeps) when using finely ground coffee.
- Programming mode cannot be used on Single-Serve side.

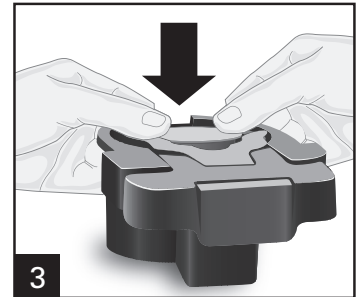


1 Plug in coffeemaker. Rotate brew selector dial to the right to select Single-Serve (☕). Press **BREW OPTIONS** button to select ☕.



2 Remove brew basket. Place a pack into the single-serve pack holder.

**CAUTION!** Cut Hazard: Single-serve pack holder has a sharp blade. Handle with care.

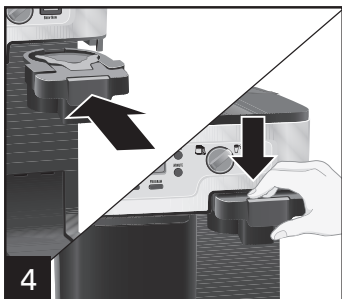


3 Press down on edge of the pack until the pack snaps into place and hole is punched in the bottom. Do not remove foil.

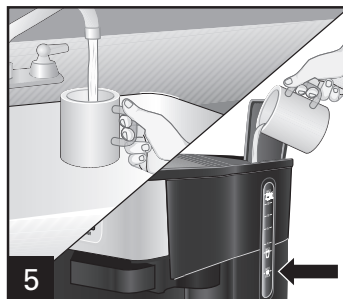
\*K-Cup is a registered trademark of Keurig, Inc. Use of the K-Cup trademark does not imply any affiliation with or endorsement by Keurig, Inc.

# How to Use Single-Serve Side –

## Brewing Single-Serve Packs (cont.)



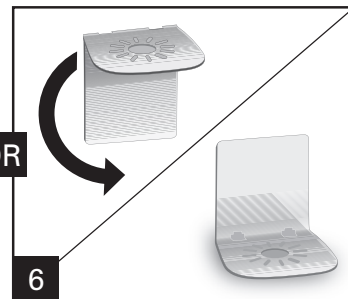
4 Press down on brew basket handle to lock and puncture the foil lid on the pack.



5 Fill reservoir with cup or travel mug into which the coffee will be brewed (maximum 10 oz. [296 ml] water).



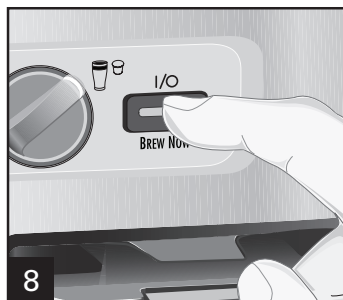
6 Ensure the multilevel/flip cup rest is firmly secured and snapped into place.



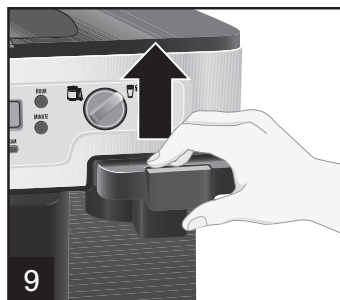
6



7 For removal of cup rest: Push up cup rest; tilt up. Push down to release.



8 Press ON/OFF (I/O) button. The blue power ON indicator light will light up to show that the coffeemaker is on. **CAUTION!** Burn Hazard: Warming plate is hot even when brewing on Single-Serve side.



9 After brewing, pull up on brew basket handle to unlock and remove. Coffeemaker will shut off automatically and light will go off when brew cycle is completed (3 beeps will sound). Allow 2 minutes to cool in between brews. Brew basket and single-serve pack holder should be rinsed after every use. Pressing down on the brew basket handle punctures the pack before brewing.

# How to Use Single-Serve Side – Brewing Coffee Grounds or Soft Pods

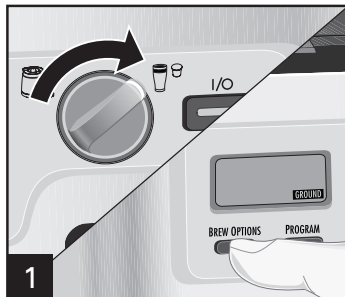
## **⚠ WARNING** Burn Hazard.

To avoid contact with hot coffee or water:

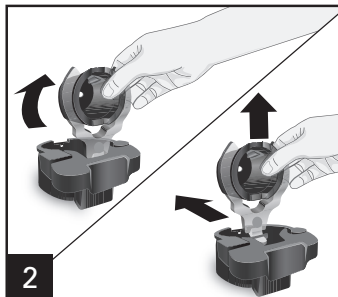
- Do not use more than 14 oz. (414 ml) of water for ground coffee or Melitta®† Pods. Adding more than 14 oz. of water to the water reservoir will cause an error message to appear in the display, along with a long beep. Place carafe on warming plate. Turn brew selector dial to Carafe (☕) and push **BREW NOW** button to remove water. Wait for 3 beeps and blue power light to turn off. Restart the Single-Serve process.
- Fill reservoir with cup or travel mug of water into which the coffee will be brewed.
- Fully insert cup or travel mug under brew basket.
- Remove single-serve pack holder before adding coffee grounds to brew basket.

This unit can be used with Melitta®† soft pods, available in the coffee aisle of your local grocery store.

**NOTE:** It can take up to 2 minutes before brewed coffee starts dispensing into your cup or travel mug.

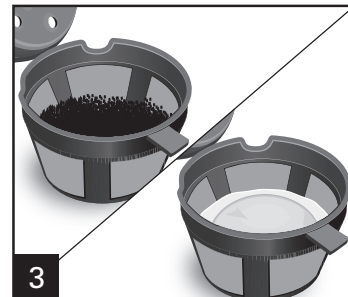


**1** Plug in coffeemaker. Rotate brew selector dial to the right to select Single-Serve (☕). Press **BREW OPTIONS** button to select GROUND mode.



**2** To remove single-serve pack holder, grasp the single-serve pack holder cup; slide towards the back and then lift out.

**CAUTION!** Cut Hazard: Removable single-serve pack holder has a sharp blade. Handle with care.



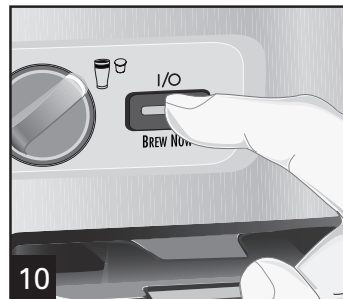
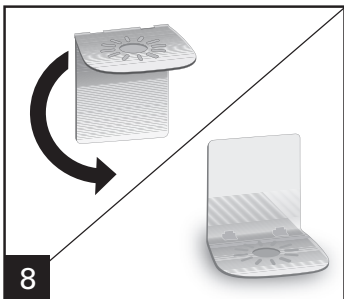
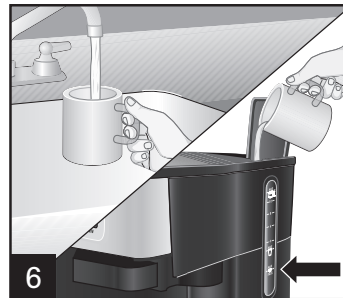
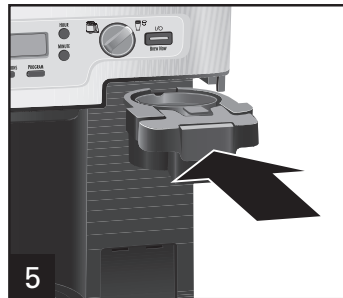
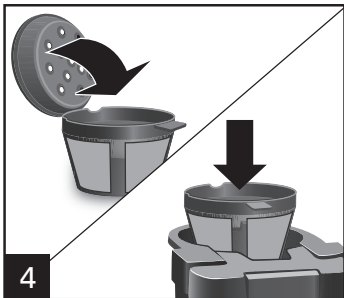
**3** Add ground coffee (3 Tablespoons [44 ml] is the MAX amount of ground coffee for brew basket) or soft pod to brew basket.

**WARNING!** Burn Hazard: To avoid overflow, keep ground coffee below MAX fill line.

†Melitta is a registered trademark of Melitta Haushaltsprodukte GmbH & CoKG. Use of the Melitta trademark does not imply any affiliation with or endorsement by Melitta Haushaltsprodukte GmbH & CoKG.

# How to Use Single-Serve Side –

Brewing Coffee Grounds or Soft Pods (cont.)



Fill reservoir with cup or travel mug into which the coffee will be brewed (maximum 14 oz. [414 ml] water). Ensure the multilevel/flip cup rest is firmly secured and snapped into place.

**CAUTION!** Burn Hazard: Warming plate is hot even when brewing on Single-Serve side.

Coffeemaker will shut off automatically and light will go off when brew cycle is completed (3 beeps will sound).

Press the ON/OFF (I/O) button again to STOP brewing midcycle.

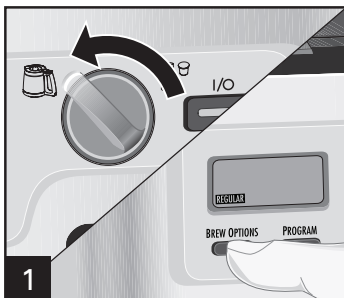
Allow 2 minutes to cool in between brews.

Brew basket should be rinsed after every use.

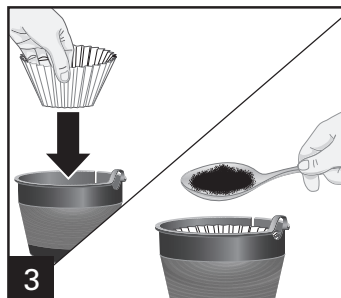
# How to Use Carafe Side

**AUTOMATIC SHUTOFF:** The coffeemaker will automatically shut off 2 hours after brew cycle is complete.

**NOTE:** The unit will only brew on one side at a time.



1 Plug in coffeemaker. Rotate dial to the left to select carafe (☺). Press **BREW OPTIONS** button to select REGULAR or BOLD modes. REGULAR is the default.



3 Place a cupcake-style paper filter in brew basket. A permanent filter may also be used.

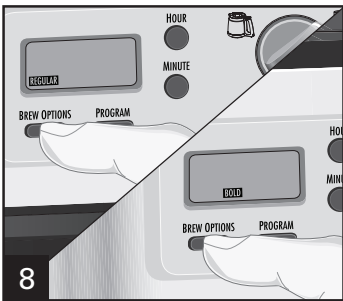
For each cup of coffee being made, place one level Tablespoon (15 ml) of coffee into filter.

Please visit [hamiltonbeach.com](http://hamiltonbeach.com) for a list of parts, accessories, and replacement parts that are available for your coffeemaker.

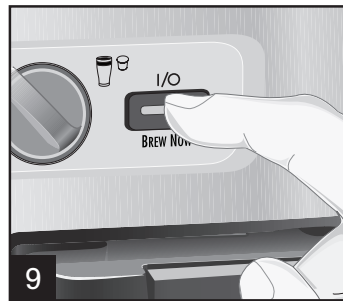


7 Place carafe, with carafe lid attached, on warming plate.

## How to Use Carafe Side (cont.)



8 For enhanced full/strong-flavored coffee, press **BREW OPTIONS** button until **BOLD** is displayed.



9 Press **I/O** (ON/OFF) button to start. Press **I/O** (ON/OFF) button again to turn off.

### PAUSE AND SERVE:

To serve coffee during the brewing cycle, remove carafe and pour a cup. By removing the carafe, the flow of coffee from the bottom of the filter basket will stop.

**WARNING!** Burn Hazard: The carafe must be replaced within 20 seconds of being removed to prevent overflow.

### NOTES:

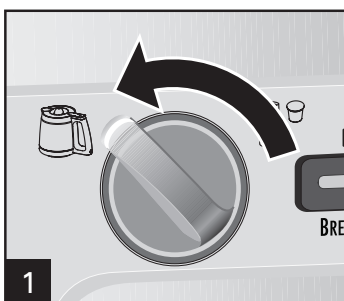
- If the coffeemaker is not turned off manually, it will automatically shut off in 2 hours.
- **BOLD** mode will require additional time to complete a brewing cycle. Coffeemaker remembers last brew option selected. If unplugged, coffeemaker defaults to **REGULAR**.

### Tips for Best-Tasting Coffee

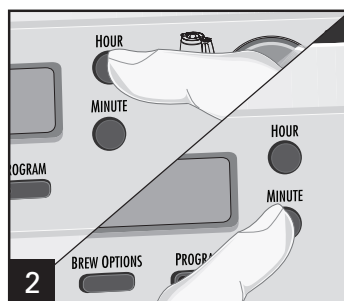
- All coffees are made from either arabica beans or robusta beans, or some combination of both. Arabica beans are slightly more expensive, but tend to produce better-tasting coffee.
- Ground coffee will become stale much faster than whole beans. If buying preground coffee, choose a package with the latest expiration date or a smaller quantity.
- If grinding whole beans, set your coffee grinder on a fine/medium grind. This will yield the best-tasting grounds. Try to use freshly ground coffee within about a week of grinding.
- Using a water filter, filtered water, or bottled water will yield better-tasting coffee than tap water.
- Use approximately 1 Tablespoon (15 ml) of grounds for each cup of coffee being made. To avoid overflow, use slightly less grounds (3/4 tablespoon [11.2 ml]) when brewing decaf or flavored coffees. Also, be aware that using coffee that is ground too finely may also cause the filter basket to overflow.
- Make sure your coffeemaker is clean. See "Care and Cleaning" sections.

# Programming — For Carafe Side Only

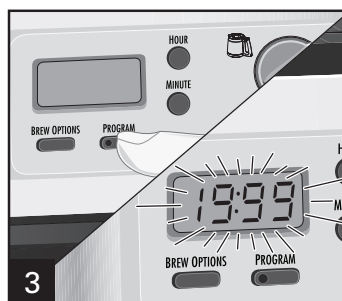
**NOTE:** The unit will only brew on one side at a time. Single-Serve side cannot be used while Carafe side is programmed.



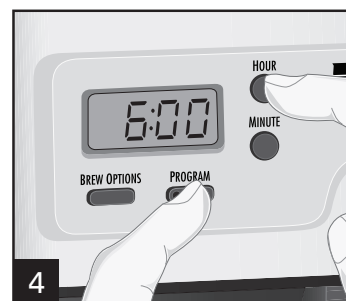
1 Rotate dial to the left to select carafe (☺).



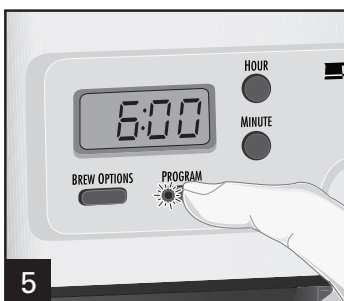
2 Press **HOUR** and then **MINUTE** to set clock.



3 Hold **PROGRAM** until clock flashes.



4 Continue holding **PROGRAM** button, press **HOUR** and **MINUTE** until the desired brewing start time is reached, and then release **PROGRAM** button.



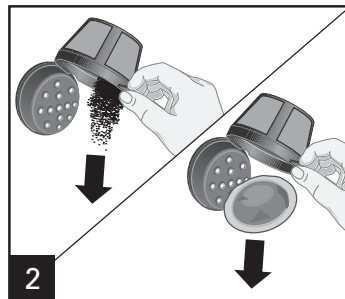
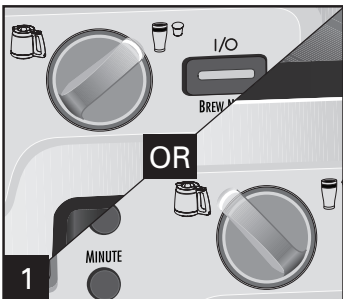
5 Press **PROGRAM** to activate automatic brewing. Green program light will illuminate to indicate the unit is programmed and will begin brewing at the selected start time.

# Care and Cleaning

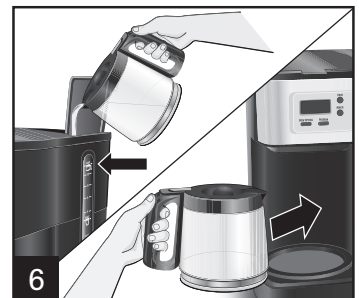
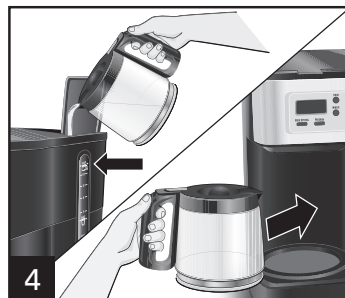
**⚠ WARNING Shock Hazard.**

Do not immerse cord, plug, or coffeemaker in any liquid.

All coffeemakers should be cleaned at least once a month (once a week for areas with hard water).



DO NOT use the "SANI" setting when washing in the dishwasher. "SANI" cycle temperatures could damage your product.



Pour 1/2 cup (118 ml) of plain white vinegar and 1/2 cup (118 ml) of cold water into water reservoir.

Press **I** (ON) button. Press **O** (OFF) button after 30 seconds and wait 30 minutes. Press **I** (ON) button. Press **O** (OFF) button when finished. Run 2-3 more brew cycles with CLEAN WATER only. Allow to cool between cycles.

# Troubleshooting – Single-Serve Side

| PROBLEM  | PROBABLE CAUSE/SOLUTION  |
|--|--|
| Err message on display.  | <ul style="list-style-type: none"> <li>• Too much water in the water reservoir. Turn brew selector dial to carafe (☕) and push <b>BREW NOW</b> button to remove water. Wait for 3 beeps and blue power light to turn off. Restart the Single-Serve process.</li> </ul>   |
| Weak coffee.   | <ul style="list-style-type: none"> <li>• Not enough ground coffee used. If using pods, make sure the pod(s) are centered in the pod basket and/or brew basket and use two pods for stronger coffee. See “How to Use Single-Serve Side.”</li> </ul>   |
| Coffee overflows from brew basket, travel mug, or regular mug. | <ul style="list-style-type: none"> <li>• Excessive amount of water in reservoir. Use travel mug or mug into which coffee will be brewed to fill reservoir. Use slightly less grounds when brewing decaffeinated, flavored, or finely ground coffee. Or use medium ground coffee.</li> </ul>  |
| Coffee tastes bad.   | <ul style="list-style-type: none"> <li>• Coffeemaker needs cleaning.</li> <li>• Coffee ground too coarsely or too finely. Set coffee grinder to automatic drip grind.</li> <li>• Poor coffee quality and freshness.</li> <li>• Poor water quality (use filtered or bottled water).</li> </ul>  |
| Water exits carafe side.                                       | <ul style="list-style-type: none"> <li>• Make sure selector dial is set to Single-Serve side.</li> </ul>   |
| Auto-start feature does not work with Single-Serve side.       | <ul style="list-style-type: none"> <li>• Auto-start feature is not designed to work with Single-Serve side. Program mode is for Carafe side only.</li> </ul>   |
| Clear water when brewing with single-serve pack.               | <ul style="list-style-type: none"> <li>• Forgot to lock handle down, which pierces top foil of single-serve packs.</li> </ul>  |
| Steam flows up across control panel.                           | <ul style="list-style-type: none"> <li>• When brewing ground coffee with single-serve pack holder assembly removed, steam will travel up across the control panel if the basket handle is pressed down. Leave the handle up for ground coffee or soft pods.</li> <li>• Do not exceed MAX water level for single-serve pack brewing.</li> </ul> |

# Troubleshooting – Carafe Side

| PROBLEM                                       | PROBABLE CAUSE/SOLUTION  |
|---|--|
| Brew basket overflows or coffee brews slowly. | <ul style="list-style-type: none"><li>• Excessive amounts of ground coffee.</li><li>• Decaffeinated and/or coffee ground too finely can cause overflow. Use slightly less grounds when brewing decaffeinated, flavored, or finely ground coffee. Or use medium ground coffee.</li><li>• Coffeemaker needs cleaning.</li></ul> <p><b>If using a paper filter:</b></p> <ul style="list-style-type: none"><li>• Coffee grounds between paper filter and brew basket.</li><li>• Paper filter not open and in proper position.</li><li>• Rinse brew basket before inserting paper filter so the edges will remain pressed against the sides of the basket.</li><li>• Poor-quality paper filter.</li></ul> |
| Coffee leaks onto base.                       | <ul style="list-style-type: none"><li>• Carafe removed from warming plate for more than 20 seconds during the brewing cycle.</li></ul>   |
| Coffee tastes bad.                            | <ul style="list-style-type: none"><li>• Coffeemaker needs cleaning.</li><li>• Coffee ground too coarsely or too finely. Use medium ground coffee.</li><li>• Coffee-to-water ratio unbalanced. Adjust for personal preference.</li><li>• Poor coffee quality and freshness.</li><li>• Poor water quality (use filtered or bottled water).</li></ul>   |

# Troubleshooting – Carafe Side

| PROBLEM   | PROBABLE CAUSE/SOLUTION   |
|---|---|
| Coffee sediment in cup.   | <ul style="list-style-type: none"><li>• For Carafe side, use a high-quality, basket-style paper filter instead of optional permanent coffee filter.</li><li>• For Single-Serve side, try a more coarsely ground coffee.</li></ul>   |
| Coffee not brewing or unit will not turn on.                    | <ul style="list-style-type: none"><li>• Carafe not positioned on warming plate.</li><li>• Water reservoir is empty.</li><li>• Unit is unplugged.</li><li>• Power outage.</li><li>• Power surge. Unplug; then plug the unit back in.</li><li>• Clock requires reset after power outage.</li></ul>  |
| Longer than normal brew time.                                   | <ul style="list-style-type: none"><li>• Mineral deposits can build up in the pump of your coffeemaker. Periodic cleaning of the inside of the unit is recommended. More frequent cleaning may be necessary, depending on the hardness of your water. See “Care and Cleaning” section. <b>NOTE:</b> Do not disassemble the unit.</li></ul> |
| Water exits the Single-Serve side when brewing with the carafe. | <ul style="list-style-type: none"><li>• Make sure selector dial is set to Carafe side.</li></ul>  |

# Limited Warranty

This warranty applies to products purchased and used in the U.S. and Canada. This is the only express warranty for this product and is in lieu of any other warranty or condition.

This product is warranted to be free from defects in material and workmanship for a period of one (1) year from the date of original purchase. During this period, your exclusive remedy is repair or replacement of this product or any component found to be defective, at our option; however, you are responsible for all costs associated with returning the product to us and our returning a product or component under this warranty to you. If the product or component is no longer available, we will replace with a similar one of equal or greater value.

This warranty does not cover glass, filters, wear from normal use, use not in conformity with the printed directions, or damage to the product resulting from accident, alteration, abuse, or misuse. This warranty extends only to the original consumer purchaser or gift recipient. Keep the original sales receipt, as proof of purchase is required to make a warranty claim. This warranty is void if the product is used for other than single-family household use or subjected to any voltage and waveform other than as specified on the rating label (e.g., 120V ~ 60 Hz).

We exclude all claims for special, incidental, and consequential damages caused by breach of express or implied warranty. All liability is limited to the amount of the purchase price. **Every implied warranty, including any statutory warranty or condition of merchantability or fitness for a particular purpose, is disclaimed except to the extent prohibited by law, in which case such warranty or condition is limited to the duration of this written warranty.** This warranty gives you specific legal rights. You may have other legal rights that vary depending on where you live. Some states or provinces do not allow limitations on implied warranties or special, incidental, or consequential damages, so the foregoing limitations may not apply to you.

To make a warranty claim, do not return this appliance to the store. Please call 1.800.851.8900 in the U.S. or 1.800.267.2826 in Canada or visit [hamiltonbeach.com](http://hamiltonbeach.com) in the U.S. or [hamiltonbeach.ca](http://hamiltonbeach.ca) in Canada. For faster service, locate the model, type, and series numbers on your appliance.