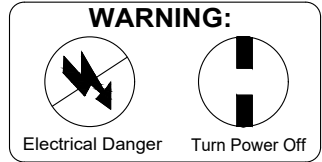
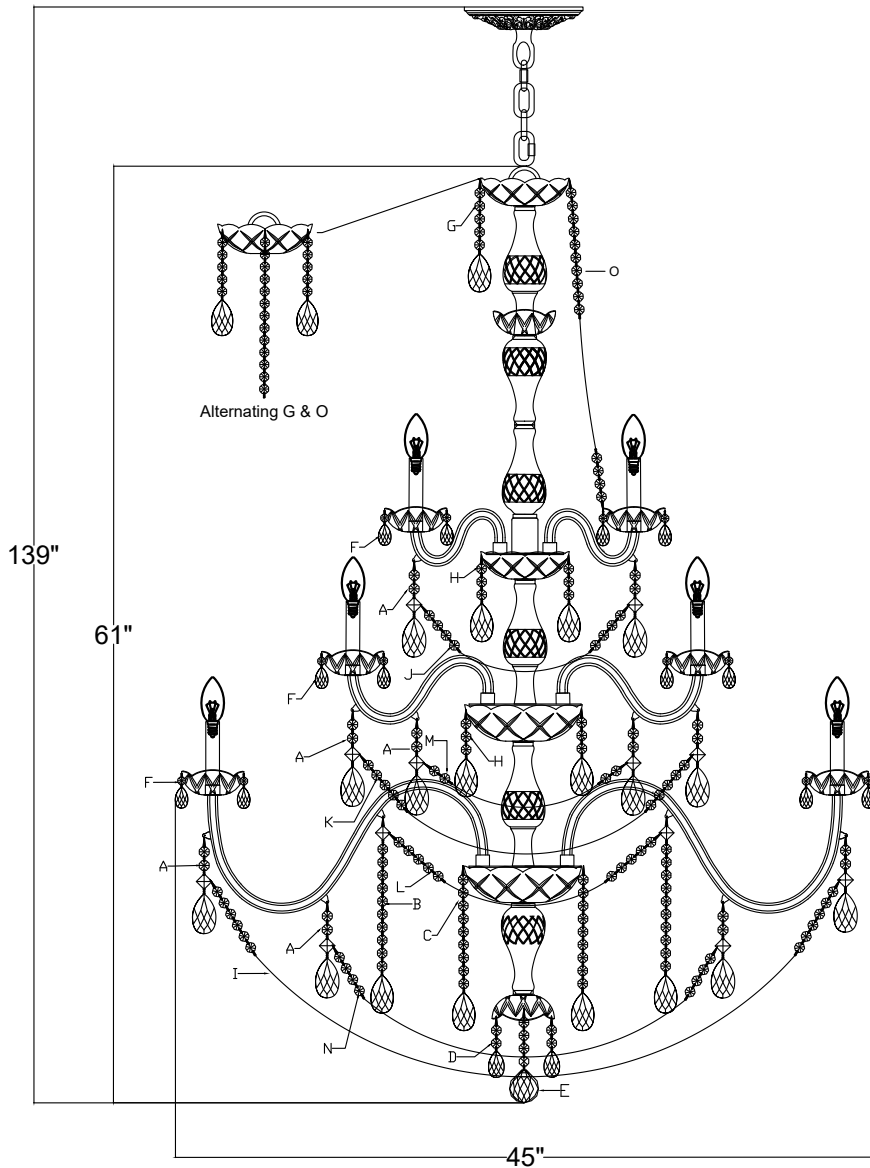


CRYSTORAMA

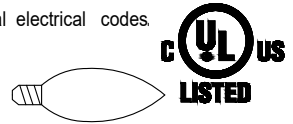


LIGHTING THE WAY FOR SIXTY YEARS

ASSEMBLY INSTRUCTION MODEL #1156-CH-CL-MWP



All electrical components must be installed by a licensed electrician in accordance with the National Electric Code and the appropriate local electrical codes.



You will need 25- Candelabra Base Bulb
25 Watts recommended 25 Watts Max.

USE LED BULBS FOR EXTENDED USE

The fixture is Damp rated

HOW TO INSTALL:

Place the fixture parts on a soft cloth-covered platform before installation of fixture.

- To install the 6" arms, slightly loosen each screw on the metal plate. Pull a female plug through a hole in the upper metal plate. Connect the male plug at the end of the upper arm with the female plug that was just pulled. Push the end of the arm with the metal tab through the hole until stopped by the metal tab (this should also push the wires and plugs back inside the metal plate). Twist the metal tab counter-clock wise until both inserts lock onto the loose screws. Tighten the screw securing the arm in place. Repeat for all 6" arms.
- Repeat Step 1 for the 12" and 18" arms. The 12" arms attaches on the middle tier and the 18" arms attaches on the bottom-most tier.
- Place the bottom bowl, metal washer, check ring, in that order, over the bottom distributor box. Secure with the coupling.
- Place the thread pipe, glass vase, check ring, metal washer, bottom bobèche, metal washer in that order, secure with the Finial.
- Screw the Center column kit 1 onto the center column kit 2.
- Attach the mounting bar onto the outlet box.
- Decide the desired hanging height and adjust the chain to the correct length.
- Raise the fixture up and do the wire connection. Attach the canopy over the mounting bar and secure with collar ring.
- Dress the crystals as illustrated.

Crystal Sets

- A. 45 Sets. (2)14mm + (1) Square + AS9-2.5"
- B. 10 Sets. (1)Square + (10)14mm + AS9-2.5"
- C. 10 Sets. (9)14mm + AS9-2.5"
- D. 5 Sets. (2)14mm + AS9-2"
- E. 1 Piece. (4)14mm + AS8-50mm Ball
- F. 100 Sets. (1)14mm + AS9-2"
- G. 5 Sets. (5)14mm + AS9-2.5"
- H. 20 Sets. (3)14mm + AS9-2.5"
- I. 10 Sets. (20)14mm
- J. 5 Sets. (11)14mm
- K. 10 Sets. (12)14mm
- L. 10 Sets. (9)14mm
- M. 10 Sets. (6)14mm
- N. 10 Sets. (12)14mm
- O. 5 Sets. (25)14mm

WARNING: This product can expose you to Lead, which is known to the State of California to cause cancer and/or birth defects or reproductive harm. For more information go to www.p65warnings.ca.gov

CRYSTORAMA



LIGHTING THE WAY FOR SIXTY YEARS

ASSEMBLY INSTRUCTION MODEL #1156-CH-CL-MWP

Part Numbers

Part Numbers

For 50lbs rated outlet box

- (1)-Long threaded rod
- (1)-Hickey
- (1)-Short threaded pip
- (3)-Metal washer
- (7)-Hex nut

For 100lbs rated outlet box

- (1)-Thread pipe
- (1)-Mounting strap
- (2)-Two machine strap
- (1)-Coupling with set screws
- (1)-Hex nut

A. (1)-Mounting hardware

- Washer x4.
- Nipple x 2.
- Hex nut x 5.
- Hickey x1.
- Safety Cable x1.
- Clamp x1.
- Set Screw x2.
- Wire connector x 2.

B. (1)-Canopy (W5"xH1")-XSN1155CHCAN5IN

C. (1)-Collar Ring

D. (1)-Collar Loop-XSN1155CHLOOP1

E. (1)-Chain (5mmx72")-XSN1155CHCHA5MM

F. (1)-Center Column Kit Loop-XSN1155CHLOOP2

G. (1)-Center Column Kit 1

Top Bowl ; Ø6",10pin,11mm center hole.

Glass Vase; H8"

Top Bobeche ; Ø4", no pin,24mm center hole.

-XSN1155BOB4IN

Glass Vase x 2 ; H6"

Metal Cover ; H1.5"

H (5)-6" Arms with holder-XSN1155CHARM6INKD

I. (1)-Center Column Kit 2

Glass Bowl ; Ø6",10 pin,11mm center hole.

Distributor Box-1; Ø4 7/8" ; 11mm center hole.
with female plug.

Glass Vase; H8"

Glass Bowl ; Ø8",10 pin,11mm center hole.

Distributor Box-2; Ø7 1/8" ; 11mm center hole.
with female plug.

Glass Vase; H8"

Distributor Box-3; Ø7 1/8", 11mm center hole.
with female plug.

J. (10)-12" Arms with holder-XSN1155CHARM12INKD

K. (10)-18" Arms with holder-XSN1156CHARM18INKD

L. (25)-Male Plug

M.(25)-Bobeche; Ø4",4 pin,24mm center hole.

-XSN1155CHBOB4PN

N. (25)-PVC Candle Sleeve

O. (1)-Bottom Bowl ; Ø8",10 pin,11mm center hole.

P. (3)-Metal washer

Q. (2)-Check Ring

R. (1)-Coupling

S. (1)-Glass pipe

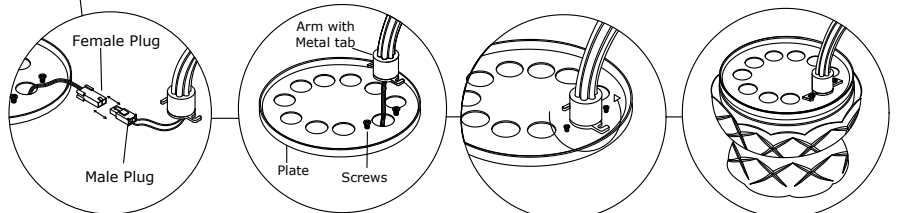
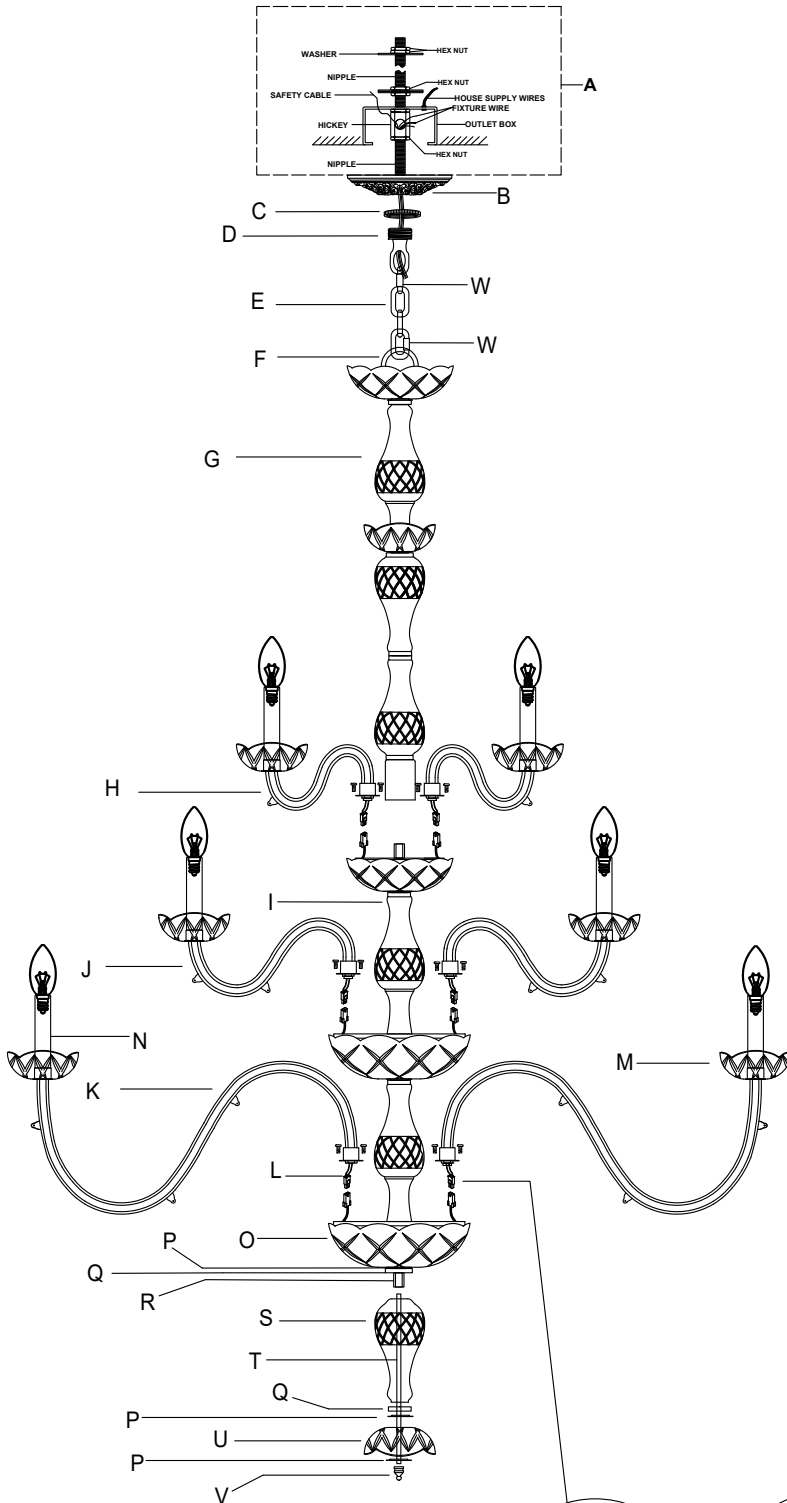
T. (1)-Thread pipe

U. (1)-Bottom Bobeche; Ø4",5 pin,24mm center hole.

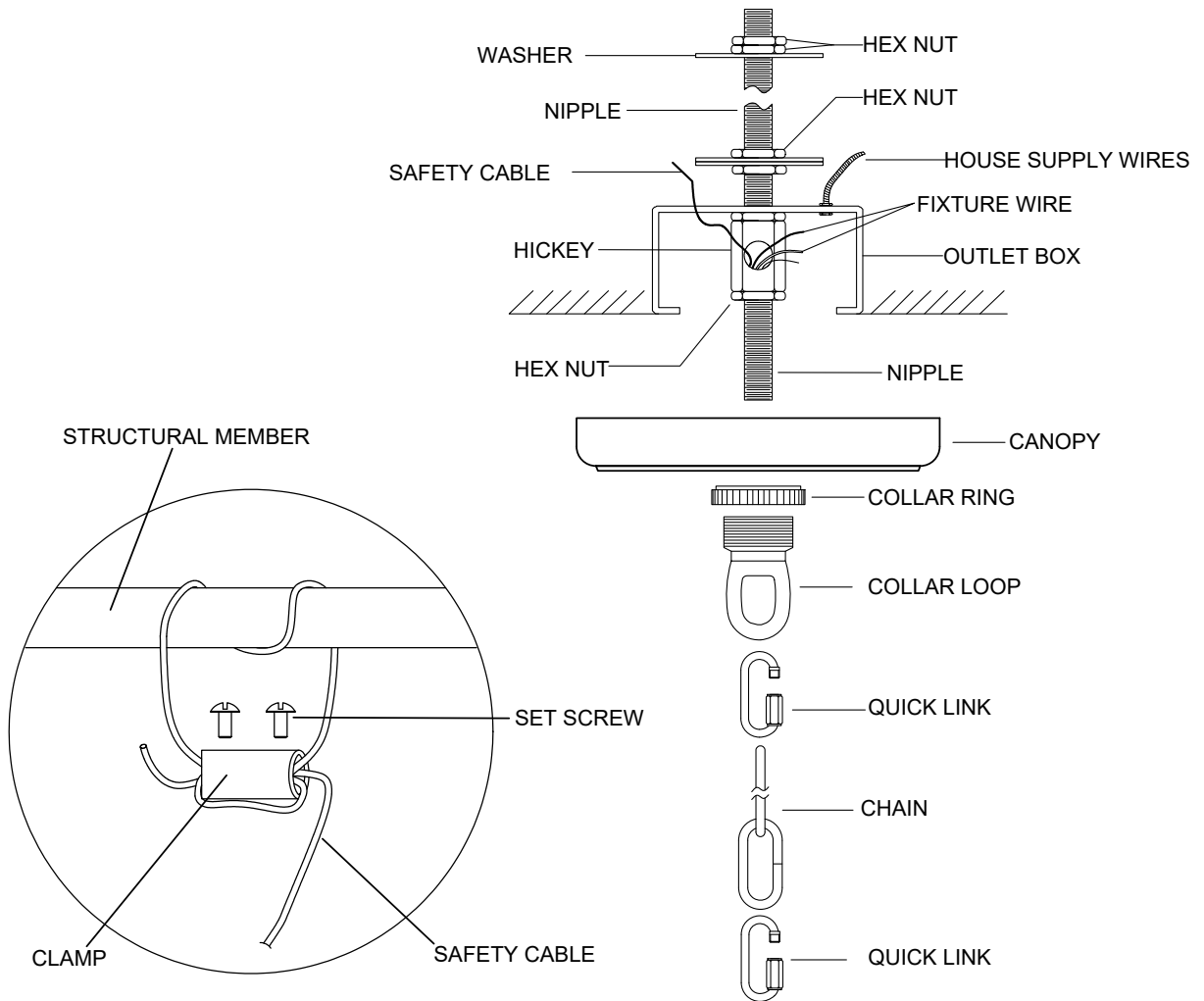
-XSN1155CHBOB5PN

V. (1)-Finial-XSN1155CHF1N

W. (2)-Chain link



SAFETY CABLE INSTALLATION INSTRUCTIONS



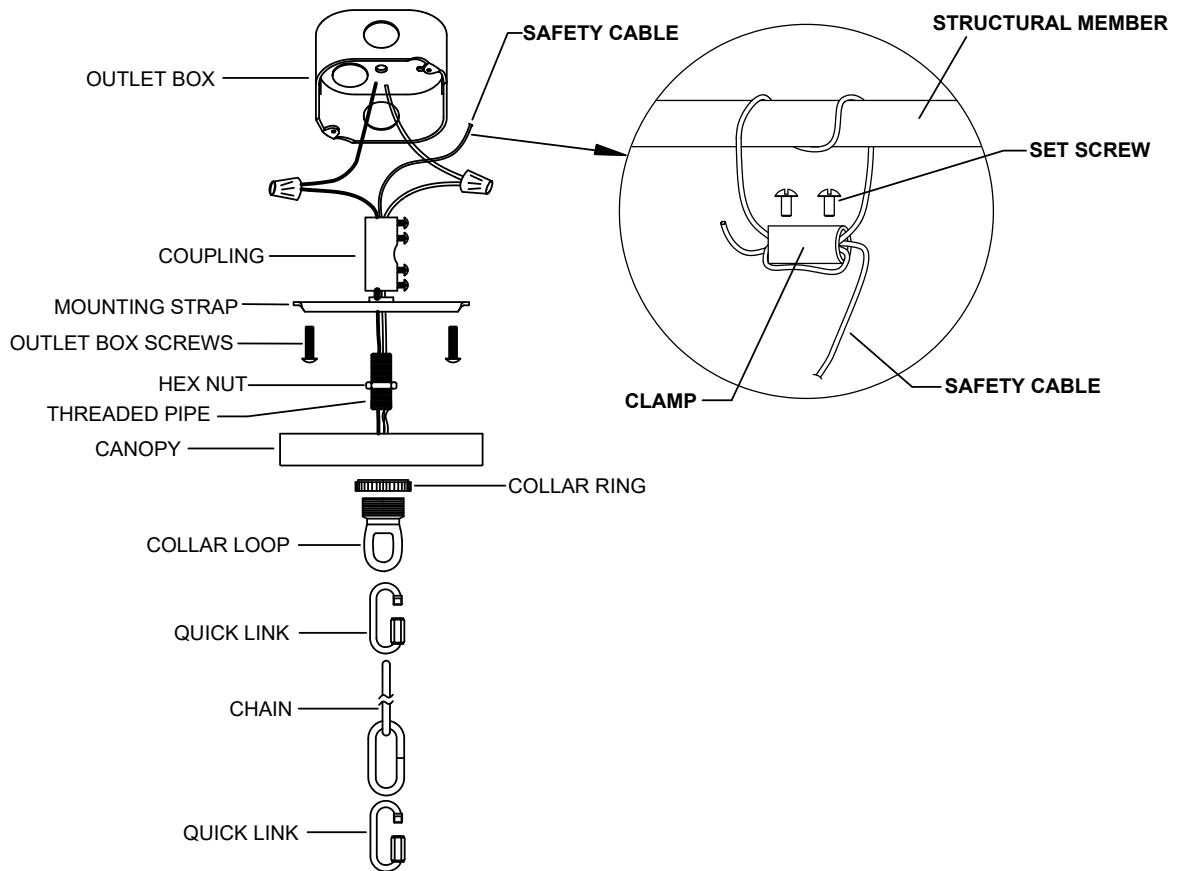
IMPORTANT:

FOR A SAFE AND SECURE INSTALLATION, THESE FIXTURES MUST BE INSTALLED BY MEANS OF SUPPORTS THAT ARE INDEPENDENT OF THE OUTLET BOX.

SUGGESTED INSTALLATION:

1. Provide a 1/4 IPS pipe with one end securely mounted to a beam or a structural member. The other end should protrude through the center of the outlet, as shown.
2. Assemble the screw collar loop, nipple, hex nuts and hickey to center 1/4 IPS support pipe and adjust overall length to allow the collar ring to hold the canopy flush to the ceiling. When the adjustments have been completed secure the hex nut, as shown.
3. Use one quick link to connect fixture loop and the bottom of chain. Slide the screw collar ring over the upper end of the chain, through the (Finished side down). Then use another quick link to connect the collar loop and the top of chain.
4. Lace the fixture wires, ground wires and safety cable through the chain and screw collar loop, exiting through the side of HICKEY. Proceed to attach the **FIXTURE GROUND WIRE** to the **HOUSE GROUND WIRE** using wire connector. Using wire connectors, connect the **HOUSE WHITE WIRE** to the **FIXTURE SUPPLY WIRE (WHITE OR RIBBED SIDE)**; connect the **HOUSE BLACK (or RED) WIRE** to the **FIXTURE SUPPLY WIRE (BLACK or SMOOTH SIDE)**. Wrap all connectors with approved electrical tape. Wrap safety cable around outlet box brace and pull cable taut. Secure cable with the clamp and (2) set screws provided, as shown.
5. Push the **CANOPY** upward over the **OUTLET BOX**. Be sure that all wires are carefully tucked into the **OUTLET BOX** cavity. Secure canopy against ceiling by threading **CANOPY LOCK RING** onto the **CANOPY LOOP**. Tighten until snug.

***** ATTENTION-If the use of the Mounting Bracket is the installation method being done, you will need an outlet box (not supplied) rated for 100lbs or more *****



NOTE:NEC CODE (314.24) requires that ceiling outlet boxes in the United States support up to 50 lbs. This fixture exceeds 50 lbs. and must be installed using an outlet box approved for up to 100 lbs. or independently of the existing outlet box. Installation hardware and instructions are provided for both.

MOUNTING TO A 100 lb. MAX. APPROVED OUTLET BOX.

1. Feed the Support cable from the fixture through the outlet box. Drill 3/16" diameter hole in outlet box if no other holes are available. Wrap safety cable around the structural member and pull cable taut. Secure cable with the clamp and (2) set screws provided.
2. Screw the threaded rod into the coupling until the threaded rod is flush with top of the coupling. Secure in place by tightening the sets screw.
3. Pass the threaded pipe through the mounting strap.
4. Thread screw collar loop onto the threaded rod until the threaded rod is flush with hole on lower side of screw collar loop.
5. Secure screw collar loop in place by tightening the hex nut.
6. Assemble the mounting strap to outlet box using screws provided with outlet box.
7. Use one quick link to connect fixture loop and the bottom of chain. Slide the screw collar ring over the upper end of the chain, through the (Finished side down). Then use another quick link to connect collar loop and the top of chain.
8. Lace the fixture wires, ground wires and safety cable through the chain and screw collar loop. Proceed to attach the FIXTURE GROUND WIRE to HOUSE GROUND WIRE using wire connector. Using wire connectors, connect the HOUSE WHITE WIRE to the FIXTURE SUPPLY WIRE (WHITE OR RIBBED SIDE); connect the HOUSE BLACK (or RED) WIRE to the FIXTURE SUPPLY WIRE (BLACK or SMOOTH SIDE). Wrap all connectors with approved electrical tape.
9. Push the CANOPY upward over the OUTLET BOX. Be sure that all wires are carefully tucked into the OUTLET BOX cavity. Secure canopy against ceiling by threading CANOPY LOCK RING onto the CANOPY LOOP. Tighten until snug.