

BEFORE YOU BEGIN:

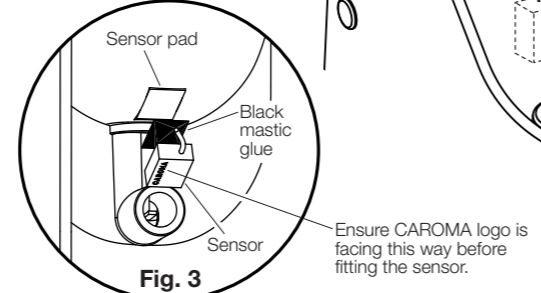
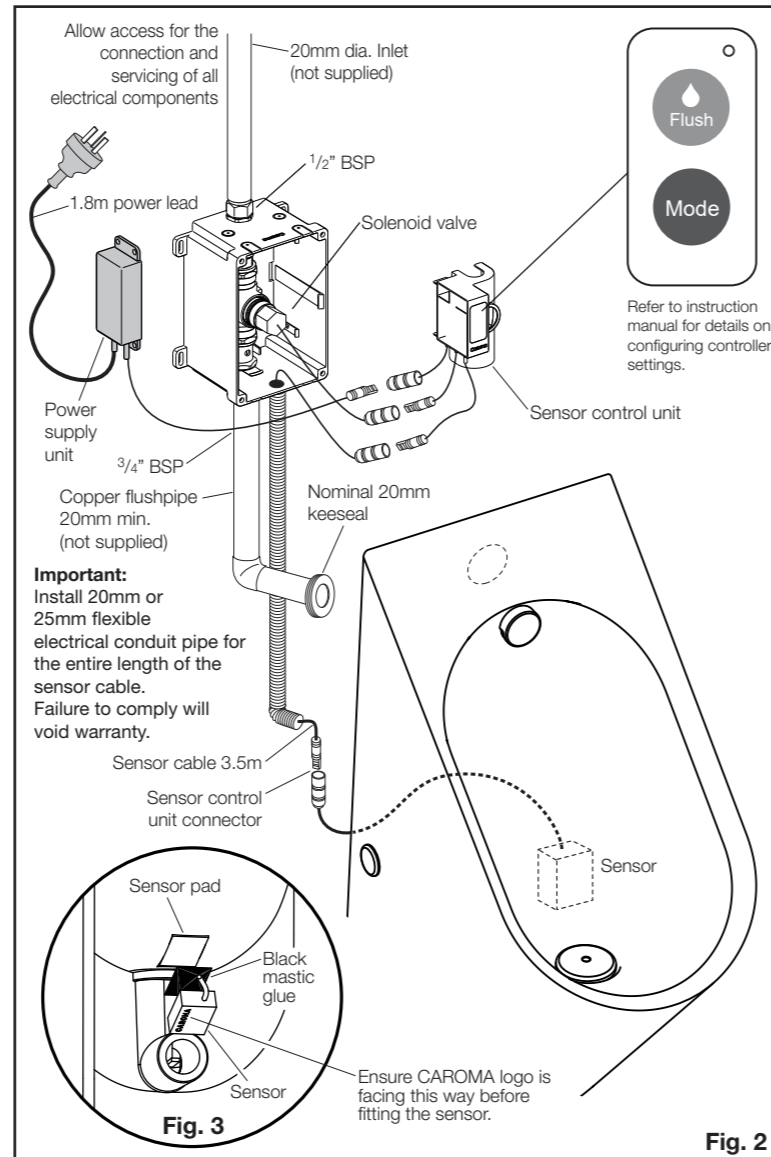
CAUTION - FRAGILE.

To avoid breakage and possible injury, handle with care. Do not drop or hit with hard objects.

IMPORTANT: The lines must be flushed prior to installing solenoid valve.

1. Install flush valve as required, inwall (Fig. 1), induct (Fig. 4) or in ceiling (Fig. 5).
2. Connect water supply and flushpipe. Flushpipe must be vertical and straight otherwise water back up can occur.
3. **IMPORTANT:** Fit flexible electrical conduit pipe for sensor cable without kinks, (not supplied).
4. The operation flow pressure of the valve is 300 to 500 kPa (30 to 50 metres head) to achieve a minimum flow to the valve of 18 litres / minute necessary to flush the urinal.
5. Remove brass protective plug and install the Solenoid Valve into position.
6. Make connection from Solenoid Valve to sensor control unit.
7. Mount Sensor Control Unit, as detailed in Fig. 1.
8. Make connection from Power Supply Unit to Sensor Control Unit as detailed in Fig. 2. **DO NOT SWITCH ON POWER SUPPLY.**
9. Clean rectangle pad area at the back of the urinal ensuring it is free of dust and grease. Apply mastic glue supplied to the black plastic side of the Sensor (opposite side to the label). Adhere Sensor on the urinal with cable pointing upwards, as detailed in Fig. 3. Ensure the sensor is firmly stuck onto the urinal. Connect Sensor Control Unit Connector as detailed in Fig. 2.
10. Ensure correct connections are made prior to installing urinal. Switch ON Power supply.
- Note:** Surge protectors are recommended to avoid power spikes affecting the life of the transformer and the electronic control module. Transformers should not be plugged in until all major electrical work has been completed on site.
- Note:** Unit is factory preset to discharge 0.8 litres at 300 - 400kPa inlet pressure. If the inlet pressure is 401 - 500kPa, press and hold controller FLUSH button for 5 seconds to change the pressure setting. See instruction manual for complete details.
11. **Suggested onsite method of determining discharge volume of 0.8 litres per flush.** Activate the flush valve by waving your hand in front of the Sensor. Discharge the water through a hose into a container and measure the discharge volume.
12. Install the urinal and check for leaks.
13. Install optional cover plate on inwall installation only.

Note: Refer to Caroma technical manual for more information.



Inwall Installation

IMPORTANT:

The product is subject to normal wear. All components should be checked on a regular basis and replaced as needed to maintain the urinals performance. All service to be performed by an authorised service person.

Cleaning and Maintenance

To preserve the glazed surface, clean with a mild household detergent or warm soapy water.

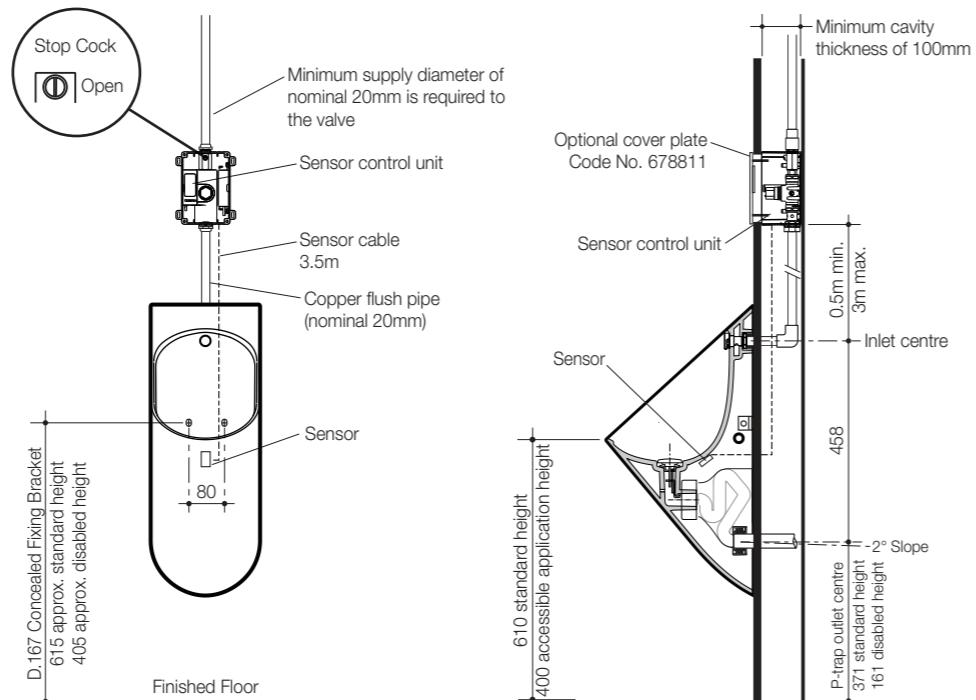


Fig. 1

Induct Installation

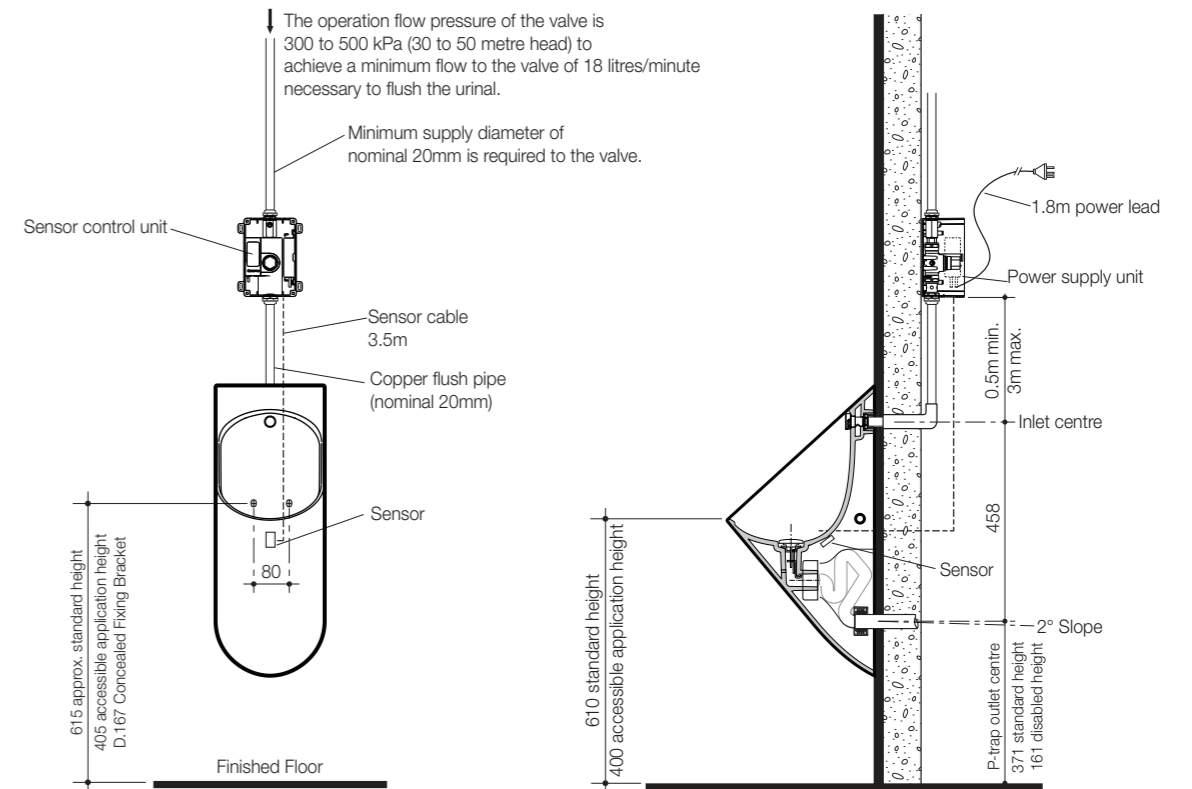


Fig. 4

Inceiling Installation

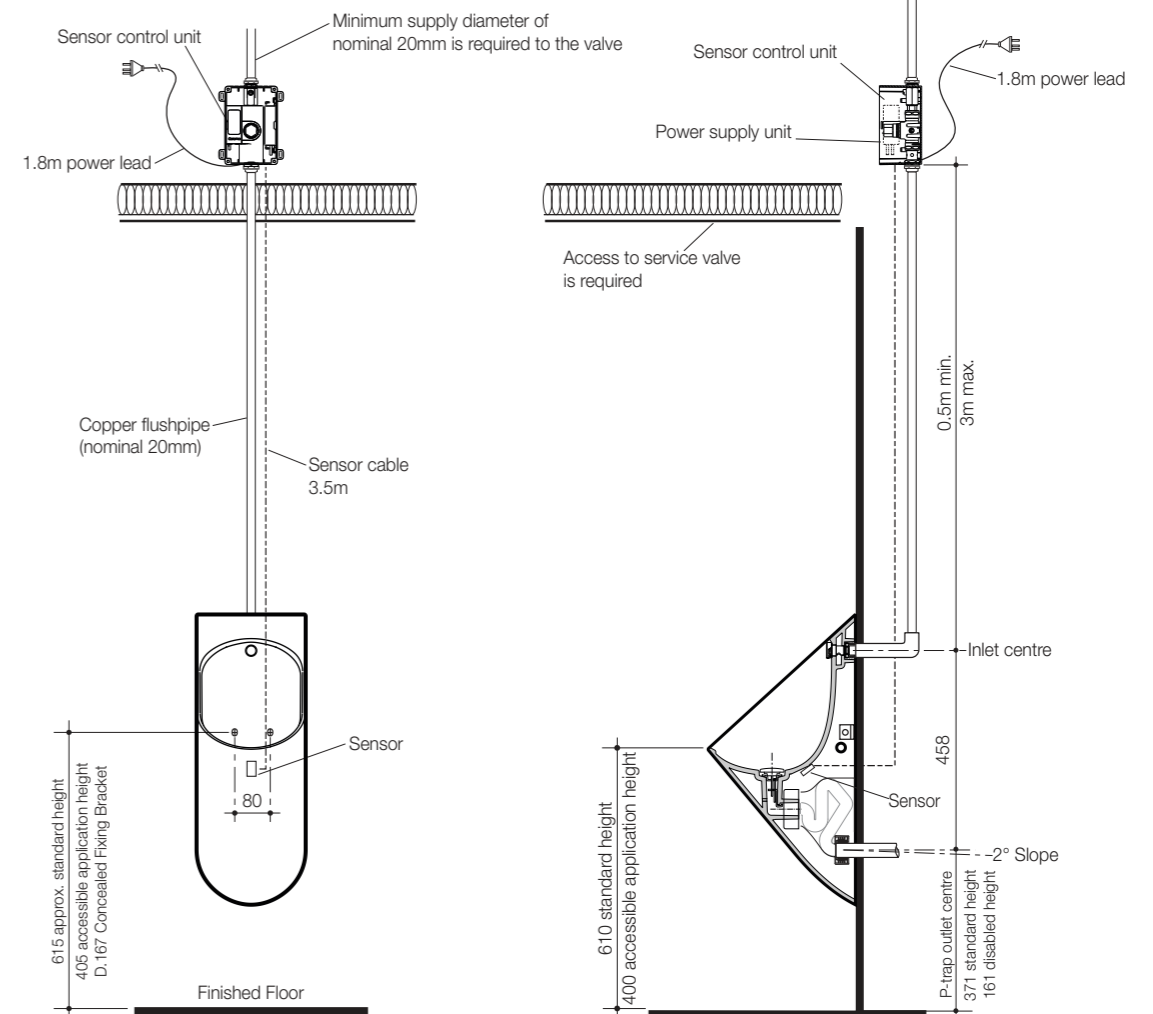


Fig. 5