

boAt



AAVANTE 2.1 **1650**

2.1-Channel 160W RMS
boAt Signature Sound with Wireless Subwoofer



AAVANTE 2.1 1650

Thank you for choosing the boAt Aavante 2.1 1650 as the audio source for your home. You are a step away from the realm of pure audio bliss. Stay plugged into the sound with an array of wired connections, USB port, and wireless Bluetooth v5.4 technology. This 2.1-Channel soundbar with a wireless subwoofer provides balanced sound for movies, music, and even video games where you can experience cinematic sound that revolves around you. We recommend that this manual be carefully read for proper usage and referred to in case of difficulties.


COMPONENTS LIST


- 1x Soundbar
- 1x Wireless Subwoofer
- 2x AAA Batteries
- 1x Remote Control
- 1x User Manual
- 2x Power Cables
- 1x AUX Cable
- 1x Warranty Card
- 1x Wall Mount Kit

SAFETY & WARNINGS

Caution

To reduce the risk of electric shock, do not dismantle the product and do not expose the apparatus to rain or moisture, The unit has no user-serviceable parts inside. Refer servicing to qualified personnel only

 The lightning flash within an equilateral triangle is intended to alert you to the presence of uninsulated dangerous voltage within the product's enclosure that may be of sufficient magnitude to constitute an electric shock to a person or persons.

 Important! This symbol alerts you to read and observe important warnings and instructions on the unit or in this manual.

Notice:

This appliance is not intended for use by people (including children) with reduced physical sensory or mental capabilities, or lack of experience and knowledge unless they are under proper supervision.

Children should be supervised to ensure that they do not play with the appliance.

1. To prevent possible hearing damage, do not listen at high volume levels for long periods of time or a sudden high volume level.
2. Never use the device unsupervised! Switch off the device whenever you are not using it, even if not using it only for a short while.
3. The appliance is not intended to be operated by means of an external timer or separate remote controller system.
4. If the power supply cord is damaged, it must be replaced by the manufacturer, its service agent or similarly qualified persons in order to avoid a hazard.
5. Before operating this system, check the voltage of this system to see if it is identical to the voltage of your local power supply.
6. The unit shouldn't be impeded by covering the ventilation opening with items such as newspaper, table-cloths, curtains etc. Make sure that there are at least 20 cm of space above & at least 5 cm of space on each side of the unit.
7. The apparatus must not be exposed to dripping or splashing. Don't place objects filled with liquids such as vases, bottles or humidifiers on the unit.
8. To prevent fire or shock hazard, don't expose this equipment to direct heat, rain, moisture or dust.
9. Do not place this unit near any water sources e.g. taps, bathtubs, washing machines or swimming pools, Ensure that you place the unit on a dry, stable surface.
10. Do not place this unit close to a strong magnetic field.
11. Do not place the unit on an amplifier or a receiver.
12. Do not place this unit in a damp area as the moisture will affect the life of electric components.
13. Do not attempt to clean the unit with chemical solvents as this might damage the finish. Wipe with a clean, dry or slightly damp cloth.

14. When removing the power plug from the wall outlet, always pull directly on the plug, never pull on the cord.
15. Depending on the electromagnetic waves used by a television broadcast, if a TV is turned on near this unit while it is also on, lines might appear on the LED TV. Neither this unit nor the TV is malfunctioning. If you see such lines, keep this unit away from the TV set.
16. The mains plug is used to disconnect the device, the disconnected device should remain readily operable.

IMPORTANT SAFETY INSTRUCTIONS

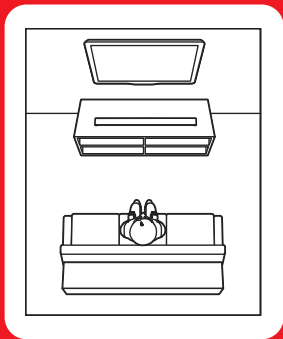
1. Read, keep, and follow all instructions. Heed all warnings.
2. Avoid dropping. Do not disassemble.
3. Do not use any corrosive cleaner/oil to clean. Clean only with a dry cloth.
4. Do not submerge in water; do not use this appliance near water. The product should not be exposed to dripping or splashing water.
5. Do not block any ventilation openings. Install it in accordance with the manufacturer's instructions.
6. Avoid extreme temperatures. Do not install near any heat sources such as radiators, heaters, stoves, or other apparatus (including amplifiers) that produce heat.
7. Protect the power cord from being walked on or pinched, particularly at plugs, convenience receptacles, or where they exit from the appliance.
8. Only use original or certified cables or attachments/accessories specified by the manufacturer.
9. Do not use the device outdoors during thunderstorms. Unplug this appliance during lightning storms or when unused for long periods of time.
10. Refer all servicing to qualified service personnel only. Servicing is required when the appliance has been damaged in any way, for example, when the power-supply cord or plug is damaged, liquid has been spilled or objects have fallen into the appliance, the appliance has been exposed to rain or moisture, does not operate normally, or has been dropped.
11. The AC plug is used to disconnect the device; the disconnected device should remain readily operable. To disconnect the device from the AC power completely, the AC plug must be removed from the AC outlet completely.

UNPACKING AND SET UP

- Remove the soundbar from the carton and remove all packing material from the soundbar. Save the packing material, if possible, in case the soundbar ever needs to be serviced or transported. The original carton and packing material are the only safe way to pack your soundbar to protect it from damage in transit.
- Remove any descriptive labels or stickers on the front or top of the cabinet. Do not remove any labels or stickers from the back or bottom of the cabinet.
- Place your soundbar on a level surface such as a table, desk, or shelf, convenient to an AC outlet, out of direct sunlight, and away from sources of excess heat, dirt, dust, moisture, humidity, or vibration.
- Unwind the line cord connecting the AC adapter and extend it to its full length.

INSTALLATION - FREE STANDING

This soundbar can sit free-standing on a surface, or it can be mounted on a wall.

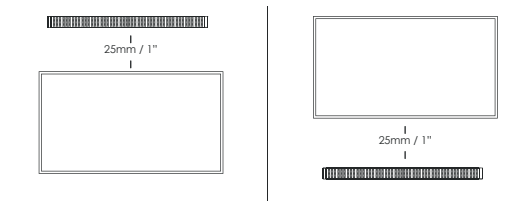


- Place the soundbar horizontally on a flat surface such as a TV unit or shelf and align it centrally with the TV screen.
- Allow some space between the soundbar and the wall.
- Don't place it inside a cabinet or a walled shelf. Follow this guidance for the best sound output and good airflow around the soundbar.

INSTALLATION – MOUNT ON THE WALL

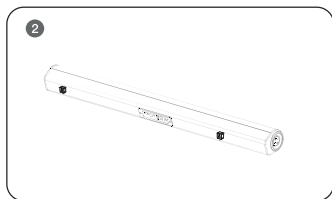
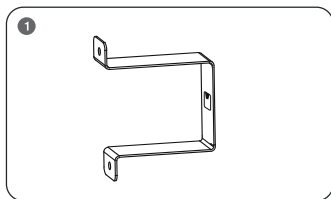
Warnings:

- If you don't feel confident to correctly and securely wall-mount the soundbar, seek the assistance of an experienced person or professional.
- Install the soundbar on a vertical, fast, reinforced area of the wall.
- For plaster walls, it is recommended to screw into wall studs for greater security.
- For optimum performance, allow at least 25mm/1" distance between the soundbar and the TV.

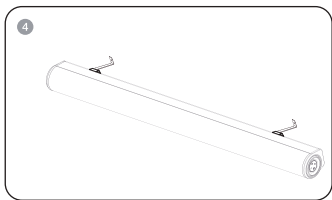
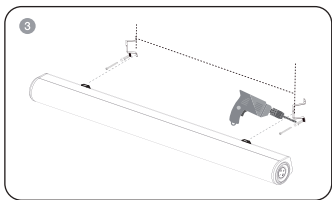


Wall mounting instructions are as follows:

1. Choose the mounting location at which you want to mount your soundbar. Ideally, it should be centred under your TV and at ear level.
2. Drill two holes in the wall aligning with the mounting points of the soundbar's wall bracket.
3. Insert the plastic wall plugs into the holes.
4. Align the metal brackets with the holes and fix them to the wall using the provided screws.
5. Hang the soundbar to the metal wall bracket hook using the plastic wall mount attached to the soundbar body. Gently slide or snap the soundbar onto the wall mounts until it is secure.



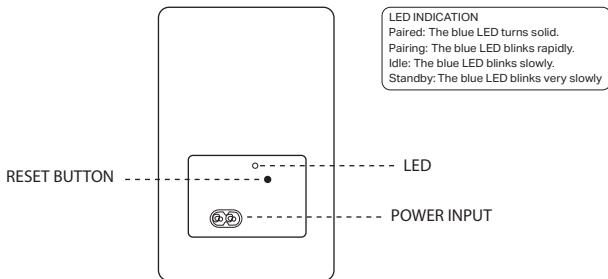
* Note : Product image for reference only.



* Note : Product image for reference only.

WIRELESS SUBWOOFER & SOUNDBAR CONNECTION

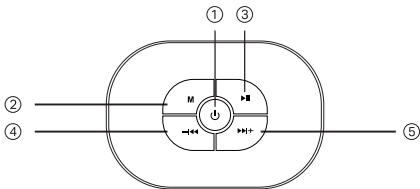
- Connect the wireless subwoofer and soundbar to the power supply.
- Switch on the subwoofer and the soundbar. The LED will blink rapidly in blue colour.
- The soundbar and the subwoofer will pair automatically within 10 seconds & the blinking blue LED will turn solid to indicate successful pairing.



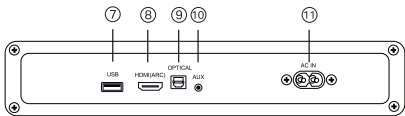
Reset Subwoofer: Short press the Reset button to disconnect the subwoofer, if needed, and double press the button to retry pairing.

CONTROLS AND CONNECTIONS

Get to know your soundbar:



1	Power Button	Short press for standby ON/OFF
2	Mode Button (M)	Short press in steps to choose among Bluetooth, HDMI(ARC), Optical, AUX and USB modes.
3	Play/Pause Button	In Bluetooth mode, short press to play/pause and double press to disconnect/reconnect with the currently connected device. In USB mode, short press to play/pause. In AUX, HDMI & Optical modes, short press to mute/unmute. In all modes, long press to reset the soundbar to default settings.
4	◀◀ Button	Short press in steps to decrease the volume Long press to return to the previous track.
5	▶▶+ Button	Short press in steps to increase the volume Long press to skip to the next track.



7	USB Input	Connect the USB flash drive to the USB port on the soundbar.
8	HDMI(ARC)	Connect to HDMI (ARC).
9	OPTICAL	Connect to an optical audio output on TV or digital devices.
10	AUX	Auxiliary Audio input from MP3/Phone/set-top box devices.
11	POWER INPUT	AC 110-240V~50/60Hz

REMOTE CONTROL BATTERY SETUP AND REPLACEMENT

Please insert the batteries as shown below-

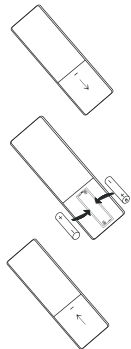
Step 1: Remove the battery compartment cover.

Step 2: Insert two AAA batteries according to the polarity markings (+ / -) inside the compartment. Make sure the batteries are correctly aligned and properly pushed into place.

Step 3: Close the battery compartment.

PRECAUTIONS WHEN USING BATTERIES:

- Do not use old and new batteries together.
- The batteries must not be exposed to excessive heat such as sunshine, fire etc.
- Do not use different types of batteries together.
- Install the batteries correctly as per the polarity markings to prevent battery leakage.
- Remove the batteries from the remote if you do not intend to use it for a long time.
- When discarding used batteries, follow the guidelines for recycling and disposal of batteries that apply in your local area.
- Keep batteries away from children and pets.

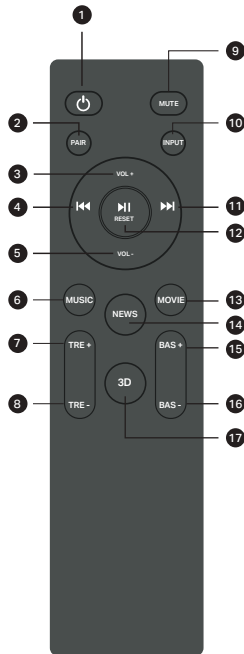


OPERATING RANGE OF THE REMOTE CONTROL

- When the unit is mounted on a wall, point the remote control at the remote-control sensor on the panel. The provided remote control allows the unit to be operated from a distance.
- Even if the remote control is operated within the effective range of 26.2 feet (8m), remote control operation may be impossible if there are any obstacles between the unit and the remote control.
- If the remote control is operated near other products which generate infrared rays, or if other remote-control device using infrared rays are used near the unit, it may operate incorrectly. Conversely, the other products may operate incorrectly.

REMOTE CONTROL OVERVIEW

1. Power Button: Short press to enter standby mode for Power ON/OFF.
2. Pair: Short press the button to connect or disconnect with the pairing device.
3. Volume (+): Short press to increase the volume.
4. Previous Button: In Bluetooth & USB modes, short press to return to the previous track; In USB mode, long press to fast rewind.
5. Volume (-): Short press to decrease the volume.
6. MUSIC: Short press for MUSIC EQ effect.
7. TR+ : Short press to increase treble.
8. TR- : Short press to decrease treble.
9. Mute: Short press to Mute/Unmute.
10. INPUT: Short press to switch among- Bluetooth, HDMI(ARC), Optical, AUX, and USB input modes
11. Next Button: In Bluetooth & USB modes, short press to skip to the next track; In USB mode, long press to fast forward.
12. Reset/Play-Pause Button: In Bluetooth or USB mode, short press to play/pause; In AUX mode, short press to mute/unmute; In all modes: Press and hold the button for more than 2 seconds to clear BT history and reset the soundbar to default settings.
13. MOVIE: Short press for MOVIE EQ effect.
14. NEWS: Short press for NEWS EQ effect.
15. BASS+ : Short press to increase bass.
16. BASS- : Short press to decrease bass.
17. 3D: Short press for 3D EQ effect.



GENERAL OPERATION

Plug in the power cable of the soundbar to an external power socket; the unit goes into standby mode.

Short press the Power button on the remote or soundbar control panel to turn on the soundbar. Once powered on, the default input mode will be displayed.

① **AUX:** Use the provided 3.5mm AUX cable to connect external audio sources to the soundbar. Press the M button on the soundbar or the Input button on the remote control to select AUX mode.

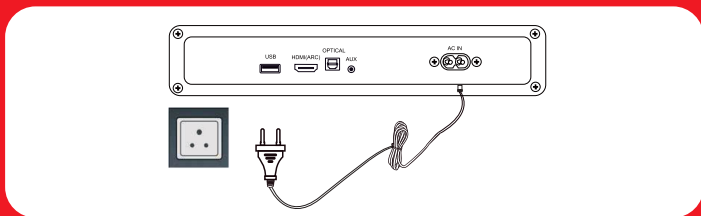
② **HDMI(ARC):** Use an HDMI cable to connect the soundbar to your HDMI(ARC) enabled device. The soundbar automatically enters HDMI mode. Alternatively, press the M button on the soundbar or the Input button on the remote control to select HDMI(ARC) mode.

③ **OPTICAL:** Use an Optical cable to connect the soundbar to your Optical device. Press the M button on the soundbar or the Input button on the remote control to select OPT mode.

④ **USB:** Insert your USB drive into the USB port on the soundbar. The soundbar goes automatically under USB mode. You can also press the M button on the soundbar or the Input button on the remote control to switch to USB mode.

⑤ **Bluetooth:** Press the M button on the soundbar or the Input button on the remote control to enter Bluetooth mode. Turn on the Bluetooth functionality on your media device, search for "Aavante 2.1 1650" and select the same to establish pairing.

To power off, press the Power button on the soundbar or the remote control. The soundbar will enter standby mode. Then, unplug it from the wall outlet.



INPUT MODES

Mode	Description
HDMI (ARC)/Optical	Audio from TV (via HDMI(ARC) port or OPTICAL jack)
Bluetooth	Sound from a Bluetooth-connected device
USB	Sound from a USB storage device
AUX	Sound from a connected device (via AUX port)

AUTO STANDBY

1. The unit will automatically turn to standby mode when no audio input is received for 30 minutes. The soundbar will wake up from standby mode when any button is pressed, or source input is received.
2. If the TV or the external unit is disconnected, switch off the soundbar. To switch the unit off completely, remove the mains plug from the mains socket. Please turn the unit off completely to save energy when not in use.

AC POWER

- Make sure the power supply is correct and never handle the power cord or its plug with wet hands when plugging into or unplugging from an outlet.
- Ensure the main power switch is in OFF state before connecting the power cord to the power supply to avoid damage to the unit.
- A damaged power cord can easily cause an electric shock or fire hazard, never use a power cord after it has gotten damaged.

BLUETOOTH PAIRING



Connect the soundbar to your Bluetooth device (such as an iPad, iPhone, iPod, Android phone, laptop or TV), and then you can listen to the audio files stored on the device through your soundbar.

1. Turn on the soundbar and short press the M button on the unit or the INPUT button on the remote control to switch the soundbar to Bluetooth mode. Upon selecting Bluetooth, "bt" will be displayed on the LED screen.
2. On the Bluetooth device, switch on the Bluetooth, search for and select "Aavante 2.1 1650" on your Bluetooth list to pair. If prompted for a password, please use "0000".
3. Upon successful pairing, a tone will sound, and the flickering of the "bt" indicator will cease, indicating a stable connection.
4. Adjust the volume using either the volume buttons on the soundbar or those on the remote control.
5. The remote control features playback controls for Bluetooth mode. Short press the PAIR button to disconnect or reconnect with the previously paired Bluetooth device.
6. If desired, modify the audio settings using the corresponding buttons on the remote control.

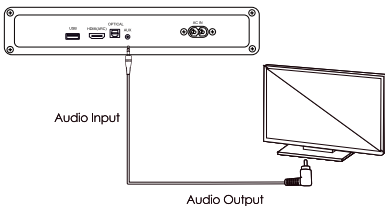
Note:

- If you face connectivity issues, remove Aavante 2.1 1650 from your device's Bluetooth history and ensure it's less than 8 meters away. Then try pairing again. To get the best sound quality, make sure there is a clear line of sight between the connected device and your soundbar.
- If your pairing device or connected device is switched off or manually disconnected, the soundbar will automatically enter pairing mode.
- The music streaming may be interrupted by obstacles between the device and soundbar, such as a wall, metallic casing that covers the device, or other devices nearby that operate at the same frequency.

PLAYING VIA USB PORT

- The soundbar automatically switches to USB input mode when a USB flash drive is inserted (this mode isn't selectable on the soundbar or remote control unless a USB flash drive is connected), indicated by the LED display showing "Usb".
- If the soundbar fails to switch automatically when powered on with a USB flash drive inserted, press the INPUT button on the remote control or M button on the soundbar to manually switch to USB mode.
- Ensure that your USB flash drive contains MP3 audio files (other file types not supported).
- Connect the USB flash drive to the USB port on the soundbar or via a USB adapter (or your own USB extension cable connected to the USB port).
- Short press the +/- buttons to adjust the volume to your desired level.
- Long press the ►► button on the soundbar to skip to the next track. Short press the 'Next' button on the remote control to skip to the next track and long press the 'Next' button on the remote control to fast forward.
- Long press the ◀◀ button on the soundbar to return to the previous track. Short press the 'Previous' button on the remote control to return to the previous track and long press the 'Previous' button on the remote control to fast rewind.

PLAYING VIA AUX MODE



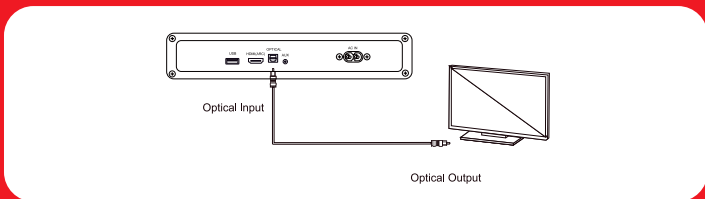
- Use a 3.5mm to 3.5mm audio cable to connect the PC, tablet, smartphone, TV's headphone socket to the AUX socket on the soundbar.

- Use an RCA to 3.5mm audio cable to connect the Blu-Ray DVD Player/ TV's audio output socket to the AUX socket on the soundbar.
- Then short press the M button on the soundbar or the Input button on the remote control to switch to AUX input mode. Once successfully connected in AUX mode, the screen will indicate "AU".
- In this mode, playback can only be controlled on your connected device.

Note:

For some computers, you may need to access the audio control panel to manually set the soundbar.

PLAYING VIA OPTICAL MODE



Using an optical cable, connect the OPTICAL connector on your soundbar (Optical digital input) to the OPTICAL OUT connector on the TV or other device. The TV or other device must have an optical digital output. Proceed as follows:

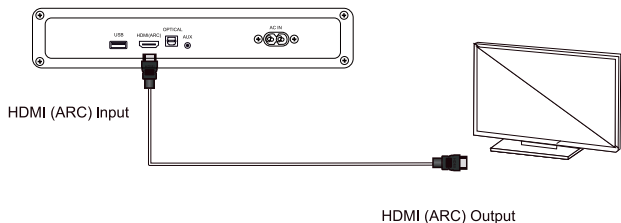
- Connect the optical cable to the OPTICAL input on the rear of the soundbar.
- Connect the other end of the optical cable to the audio output on the TV or other device.
- Set the TV to PCM Stereo or Stereo 2.0. Set the audio output mode as <automatic> or <decoded output as PCM state>.
- Start playing on the TV.
- Press the source input button 'M' on the soundbar or "INPUT" button on the remote control to activate the corresponding mode (the OPTICAL mode).
- After successfully connecting, adjust the volume using the volume buttons to suit your preferences.
- Modify the audio settings using the appropriate buttons on the remote control as needed.

Note:

When connecting a device such as a TV/Set-top box/ DVD/ game console with optical cable, set the audio output mode of the device to PCM mode (digital optical output).

Do not bend the optical cable, otherwise the cable inside will be damaged.

PLAYING VIA HDMI TV (ARC) MODE



CONNECT TO HDMI TV (ARC) SOCKET

Some 4K HDR TVs require the HDMI input or picture settings to be set for HDR content reception. For further setup details on HDR display, please refer to the instruction manual of your TV.

- ARC (Audio Return Channel)
- Your soundbar supports HDMI with an Audio Return Channel (ARC). If your TV is HDMI (ARC) compliant, you can hear the TV audio through your soundbar by using a single HDMI cable.
- Set the TV to PCM Stereo or Stereo 2.0. Set the audio output mode as <automatic> or <decoded output as PCM state>.
- Using a high-speed HDMI cable, connect HDMI (ARC) on the soundbar to HDMI (ARC) connector on your TV.
- Then short press the "M" button on the soundbar or the INPUT button on the remote control to switch to HDMI (ARC) mode. After a successful connection, if the TV supports ARC, start playing audio on your TV.

Note:

- Your TV must support the HDMI-CEC and ARC functions. HDMI-CEC and ARC must be set to be on.
- The setting method of HDMI-CEC and ARC may differ depending on the TV. For details about the ARC function, please refer to your TV owner's manual.
- Only HDMI 1.4 compatible cables can support the ARC function.

SPECIFICATIONS:

Model Name	boAt Aavante 2.1 1650
Compatibility	Bluetooth v5.4/HDMI(ARC)/Optical/AUX/ USB
Driver Size (in inches)	Soundbar: 2.25" (57.15mm)*4 Subwoofer: 6.5" (165mm)
Output Power	160W R.M.S
Frequency Response	45Hz-20kHz
Signal-to-Noise Ratio	≥82dB
Impedance	4Ω*4 + 4Ω*1
Bluetooth Transmission	Up to 10m
Bluetooth	v5.4
Working Voltage	AC 110V-240V
Dimensions	Soundbar: 950*105*72mm Wireless Subwoofer: 308*190*350mm

