

Quick Start Guide

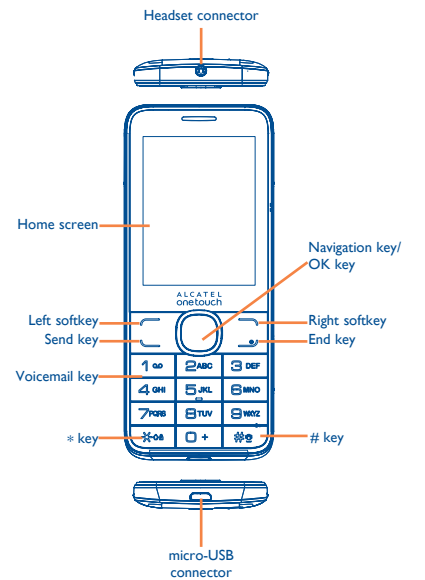
For more information about how to use the phone, please go to www.alcatelonetouch.com to download complete user manual (English version only). Moreover, from the website you can also consult FAQ, realize software upgrade, etc. (English version only).

PROTECT YOUR HEARING
To prevent possible hearing damage, do not listen at high volume levels for long periods. Exercise caution when holding your device near your ear while the loudspeaker is in use.



Your mobile.....

1.1 Keys and connectors



- Press to go left/right/up/down
- Press to confirm an option
- Left softkey
 - Unlock keypad
 - Access main menu
- Send key
 - Pick up/Send a call
 - Press: Enter Call log
 - Press and hold: Enter Fake call
- Right softkey
 - Access contacts
- Press: End a call
- Return to the Home screen
- Press and hold: Power on/off
- Press and hold: Access your voicemail
- From Idle screen
 - Press: 0
 - Press and hold: "+/P/W"
- In Edit mode
 - Press: Access symbols table
 - Press and hold: 0
- From Idle screen
 - Press: *
 - Press and hold: Lock keypad
- In Edit mode:
 - Press: Change input methods
 - Press and hold: Access language list
- From Idle screen
 - Press: #
 - Press and hold: Vibration alert
- In Edit mode
 - Press: (space)

1.2 Status bar icons ⁽¹⁾

In 2007X:

- Battery charge level.**
- Vibrate alert:** your phone vibrates, but does not ring or beep with the exception of the alarm.
- Bluetooth status (Activated).**
- Bluetooth status (Connected to an audio device).**
- Headset connected.**
- Keypad locked.**
- Call forwarding activated:** your calls are forwarded.
- Alarm or appointments programmed.**
- Level of network reception.**
- Voicemail message arrived.**
- Missed calls.**
- Radio is on.**
- Roaming.**

⁽¹⁾ The icons and illustrations in this guide are provided for informational purposes only.

- SD card scanning completed.**
- GPRS connection status (Activated).**
- GPRS connecting.**
- EDGE connecting.**
- EDGE attached.**
- Music activated.**
- MMS receipt in progress.**
- Sending an MMS.**
- Silence mode:** your phone does not ring, beep or vibrate with the exception of the alarm.
- SMS unread.**
- MMS unread.**
- (Flickering) Message list is full:** your phone cannot accept any new messages. You must access the message list and delete at least one message on your SIM card.
- Flight mode.**

In 2007D:

- Level of network reception.**
- Call forwarding activated:** your calls are forwarded.
- GPRS connection status (Activated).**
- GPRS connecting.**
- EDGE connecting.**
- EDGE attached.**

1.3 Home screen

1.3.1 Widget bar

Widgets are convenient shortcuts for quick access from the Home screen. You can customize widget bar by "Settings/Phone settings/Widget bar".

1.3.2 Change wallpaper

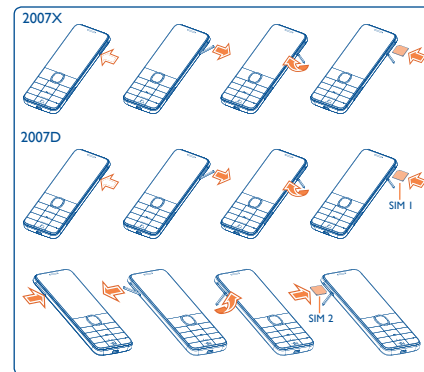
You can select a folder to choose one image as favourite wallpaper by selecting "Options/Set as/Wallpaper".

2 Getting started.....

2.1 Set-up

Inserting or removing the SIM card

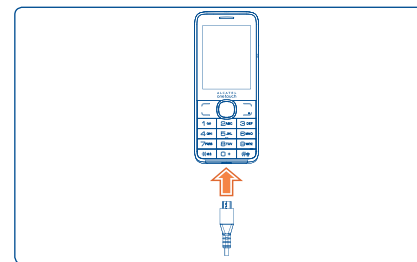
You must insert your SIM card to make phone calls.



Place the SIM card with the chip facing upwards and slide it into its housing. Make sure that it is correctly inserted. To remove the card, press and slide it out.

Your phone only supports micro-SIM cards. Do not attempt to insert other SIM card types such as mini and nano cards, as they may cause damage to your phone.

Charging the battery



Connect the battery charger to your phone and mains socket respectively.

To reduce power consumption and energy waste, when battery is fully charged, disconnect your charger from the plug switch off Bluetooth or background-running applications when not in use; reduce the backlight time, etc.

2.2 Power on your phone

Hold down the key until the telephone powers on.

2.3 Power off your phone

Hold down the key from the Home screen.

3 Making a call.....

Dial the desired number then press the send key to place the call. The number you entered can be saved to **Contacts** by selecting "Options/Save". If you make a mistake, you may press Right softkey to delete the incorrect digits.

To hang up the call, press the key.

4 Messages.....

4.1 Access

You may access this menu using the following options:

- Access from the main menu by selecting "Messages".
- Select from widget bar, and then enter the sub-menu you require.

4.2 Write message

You can select "Messages/Write msg" from the main menu or access from widget to write text/multimedia message. For dual SIM model, you can type a message and select to send it to a recipient in either the SIM1 or SIM2 directory ⁽¹⁾. One or more recipients can be added from contact list. Press "Contacts" through key to multi-select recipients from Contacts.

An SMS will be converted to MMS automatically when images, videos, audio, slides or attachments are inserted; or the message contains more than 8 pages of text.

An SMS message of more than a certain number of characters (the number of characters depends on your language) will be charged as several SMS. An MMS message containing photos and/or sounds may also be billed as more than one message. Specific letters (accent) will increase the size of the SMS, this may cause multiple SMS to be sent to your recipient.

5 Contacts.....

5.1 Consulting your contacts

You can access to this function by selecting "Contacts" from the main menu.

For dual SIM model, the complete contacts of both SIM1 and SIM2 are available in this menu ⁽¹⁾.

5.2 Adding a contact

You can add a new contact to phone or SIM card by selecting "Add contact".

7 Apps ⁽¹⁾.....

Apps store is an online software store, where you can download and install applications and games to your phone.

8 Apps mgr.....

You can manage your downloaded applications and games.

9 Camera.....

Your mobile phone is fitted with a camera for taking photos and shooting videos that you can use in different ways:

- store them as your creations in SD card or phone.
- send them in a multimedia message (MMS) to a mobile phone.
- send them directly by MMS, Bluetooth.
- customise your Home screen.
- select them as incoming call image to a contact in your Contacts.
- transfer them by data cable or microSD card to your computer.

⁽¹⁾ 2007D only.

⁽¹⁾ Depending on your network operator.

10 Media applications.....

10.1 Music.....

You can access this feature from the main menu by selecting "Music". You will have full flexibility of managing music both on your mobile and SD card.

10.2 Images.....

A library links to the images (stored in "My images") in phone or SD card to multi-mark, set as wallpaper, power on/off display and incoming call image or sent by MMS, Bluetooth.

10.3 Videos.....

Contains all video clips (stored in "My videos") in phone or SD card and enables you to play, send, delete, rename, etc.

10.4 FM radio.....

Your phone is equipped with a radio ⁽¹⁾ with RDS ⁽²⁾ functionality. You can use the application as a traditional radio with saved channels or with parallel visual information related to the radio program on the display, if you tune to stations that offer Visual Radio service. You can listen to it while running other applications.

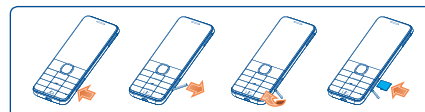
⁽¹⁾ The quality of the radio depends on the coverage of the radio station in that particular area.

⁽²⁾ Depending on your network operator and market.

11 My files.....

You will have an access to all audio and visual files stored in phone or SD card in **My files**. You can access a number of items with this option: **My audios, My images, My videos, Received, etc.**

Inserting the SD card:



Insert the external microSD card into the slot with the gold contact facing up until it's locked. To remove the external microSD card, gently push it until it's unlocked.

12 Applications.....

12.1 Facebook.....

Facebook is a social unity that connects people with friends and others who work, study and live around them. It provides a number of features with which users interact, such as Wall, Pokes, etc.

To open an account online, please go to: <http://m.facebook.com/>.

12.2 FB Messenger.....

Facebook Messenger is an instant messaging service which lets you communicate with your friends whenever they are connected to it. Sending/receiving pictures and group messaging are also supported.

12.3 Twitter.....

Twitter is a social networking and microblogging service that has gained notability and popularity worldwide. This feature enables phone users to exchange news updates and ideas with a community in the form of messages or posts. Posts are displayed on the author's profile page and delivered to the author's subscribers or followers.

To open an account online, please go to: <http://m.twitter.com>.

13 Services.....

Contact your network operator to check service availability.

14 Tools.....

14.1 Recorder.....

Accessing Recorder allows you to make voice or sound recordings.

14.2 Alarm.....

Your mobile phone has a built-in alarm clock with a snooze feature.

14.3 Calculator.....

Access this feature by selecting "Calculator" from the main menu.

Enter a number, select the type of operation to be performed using the navigation keys, and enter the second number, then select "=" to display the result.

14.4 Calendar.....

Once you enter this menu from main menu, there is a monthly-view calendar for you to keep track of important meetings, appointments, etc. Days with events entered will be marked in color.

14.5 Notes.....

You can create a note in text format by accessing "Notes" from the main menu.

14.6 Bluetooth™.....

Access this feature by pressing "Menu" through Left softkey from the Home screen to enter the main menu, then selecting "Bluetooth".

14.6.1 Access

This phone is embedded with a BT dialler feature which means that you can connect your 2007X/2007D with a host phone through a Bluetooth connection. Once successfully linked, you can receive and make calls from the host phone using this phone. Other options available are syncing with the host phone's contacts, viewing its call log, and viewing/making SMS messages sent to/from the host phone.

You can pair with the host phone through Bluetooth.

Activate host connection: Turn Bluetooth on, select to view the list of available Bluetooth devices and then press **BT dialler/On**.

You need to confirm your password (automatically displayed) in the host phone once you have chosen to pair it with your 2007X/2007D.

When pairing succeeded, the host name will be visible on your 2007X/2007D.

You only need to pair your 2007X/2007D once. It automatically reconnects to your host phone once you turn on Bluetooth both in your 2007X/2007D and host phones.

14.7 Voice alarm.....

With this menu, you can create the voice file and set it as the alarm.

14.8 Fake call.....

This program enables you to call yourself by simulating a caller number/name, ringtone at a scheduled time. It helps you to politely escape from social situations at any time you wish. This call can be rejected by key . Activate a fake call by "Fake call mode/Enable".

⁽¹⁾ Depends on software version and countries.

14.9 Call filter.....

Enable blacklist, all callers in the list will be automatically blocked. Enable whitelist, only callers in the list can be connected.

14.10 WAP.....

Access Wap options: **Homepage, Bookmarks, Go to URL, Last wap address, Recent pages, Offline pages, Service inbox, Settings.**

15 Profiles.....

With this menu, you may personalise ringtones for different events and environments.

16 Settings.....

From the main menu, select the menu icon and select the function of your choice in order to customise your telephone: **Phone settings, Call settings, Security, Network, Connectivity, Restore default** ⁽¹⁾, **Dual SIM settings** ⁽²⁾, etc.

17 Games ⁽³⁾.....

Enables you to download favorite games to your phone.

⁽¹⁾ Make the phone's settings recover to its default value. End-user data will not be erased. Enter its default password 1234 to confirm to restore and reboot.

⁽²⁾ 2007D only.

⁽³⁾ You need to download the application to your phone for the first time. May cause additional network charges for data flow to download this application.

18 Making the most of your mobile.....

PC suite

You can download PC Suite for free from the website (www.alcatelonetouch.com). The PC suite includes:

- **Backup/restore**
- **GPRS modem**

You can backup the important data in your mobile and restore them when needed.

- **Multimedia Personalization**

Customize your mobile with images, animations and melodies.

- **Messages**

You can compose SMS/MMS easily on your PC and transfer them to your phone.

Supported Operating Systems
Windows XP/Vista/Windows 7.

Mobile Upgrade
Using Mobile Upgrade tool you can update your phone's software from your PC.

Download Mobile Upgrade from ALCATEL ONETOUCH website (www.alcatelonetouch.com) and install it on your PC. Launch the tool and update your phone by following the step by step instructions (refer to the User Guide provided together with the tool).

Your phone's software will now have the latest software.

All personal information will be permanently lost following the update process. We recommend you backup your personal data using PC Suite before upgrading.

⁽¹⁾ 2007D only.

ALCATEL is a trademark of Alcatel-Lucent and is used under license by TCT Mobile Limited.

All rights reserved © Copyright 2014 TCT Mobile Limited.

TCT Mobile Limited reserves the right to alter material or technical specification without prior notice.

Supported Operating Systems

Windows XP/Vista/Windows 7.

Webcam ⁽¹⁾

You can use your phone as a webcam for instant messaging on your PC.

- Connect your phone to PC via USB cable.
- Go to **"My computer"** folder on your PC and find USB video device (Under Scanners & Cameras).

19 Latin input mode

There are two text entry methods that can be used to write messages:

- Normal: this mode allows you to type a text by choosing a letter or a sequence of characters.
- Predictive with the eZI mode: this mode speeds up the writing of your text.

Keypad inputting:

- +**: Press: Access symbols table
- ☞**: Press: Change input methods
- ☞**: Press: Enter a space

⁽¹⁾ The using of webcam may vary according to the operating system of your PC.

Safety and use.....

We recommend that you read this chapter carefully before using your phone. The manufacturer disclaims any liability for damage, which may result as a consequence of improper use or use contrary to the instructions contained herein.

- TRAFFIC SAFETY:**
Given that studies show that using a mobile phone while driving a vehicle constitutes a real risk, even when the hands-free kit is used (car kit, headset,...), drivers are requested to refrain from using their mobile when the vehicle is not parked.

When driving, do not use your phone and headphone to listen to music or to the radio. Using a headphone can be dangerous and forbidden in some areas.

When switched on, your phone emits electromagnetic waves that can interfere with the vehicle's electronic systems such as ABS anti-lock brakes or airbags. To ensure that there is no problem:

- do not place your phone on top of the dashboard or within an airbag deployment area.
- check with your car dealer or the car manufacturer to make sure that the dashboard is adequately shielded from mobile phone RF energy.

CONDITIONS OF USE:

You are advised to switch off the telephone from time to time to optimise its performance.

Switch the phone off before boarding an aircraft.

Switch the phone off when you are in health care facilities, except in designated areas. As with many other types of equipment now in regular use, mobile telephones can interfere with other electrical or electronic devices, or equipment using radio frequency.

Switch the phone off when you are near gas or flammable liquids. Strictly obey all signs and instructions posted in a fuel depot, petrol station, or chemical plant, or in any potentially explosive atmosphere.

When the phone is switched on, it should be kept at least 15 cm from any medical device such as a pacemaker, a hearing aid or insulin pump, etc. In particular when using the phone, you should hold it against the ear on the opposite side to the device, if any.

To avoid hearing impairment, pick up the call before holding your phone to your ear. Also move the handset away from your ear while using the "hands-free" mode because the amplified volume might cause hearing damage.

Do not let children use the phone and/or play with the telephone and accessories without supervision.

Please note that your phone is a unibody device, the back cover and battery are not removable. Do not attempt to disassemble your phone. If you disassemble your phone the warranty will not apply. Also disassembling the phone may damage the battery, and may cause leakage of substances that could create an allergic reaction.

Always handle your phone with care and keep it in a clean and dust-free place. Do not allow your phone to be exposed to adverse weather or environmental conditions (moisture, humidity, rain, infiltration of liquids, dust, sea air, etc.). The manufacturer's recommended operating temperature range is -10°C to +55°C.

At over 55°C the legibility of the phone's display may be impaired, though this is temporary and not serious.

Emergency call numbers may not be reachable on all cellular networks. You should never rely only on your phone for emergency calls.

Do not open, dismantle or attempt to repair your mobile phone yourself. Do not drop, throw or bend your mobile phone.

Do not use the phone if the glass made screen, is damaged, cracked or broken to avoid any injury.

Do not point it.

Use only batteries, battery chargers, and accessories which are recommended by TCT Mobile Limited and its affiliates and are compatible with your phone model. TCT Mobile Limited and its affiliates disclaim any liability for damage caused by the use of other chargers or batteries.

Remember to make back-up copies or keep a written record of all important information stored in your phone.

Some people may suffer epileptic seizures or blackouts when exposed to flashing lights, or when playing video games. These seizures or blackouts may occur even if a person never had a previous seizure or blackout. If you have experienced seizures or blackouts, or if you have a family history of such occurrences, please consult your doctor before playing video games on your phone or enabling a flashing-lights feature on your phone.

Parents should monitor their children's use of video games or other features that incorporate flashing lights on the phones. All persons should discontinue use and consult a doctor if any of the following symptoms occur: convulsion, eye or muscle twitching, loss of awareness, involuntary movements, or disorientation. To limit the likelihood of such symptoms, please take the following safety precautions:

- Do not play or use a flashing-lights feature if you are tired or need sleep.
- Take a minimum of a 15-minute break hourly.
- Play in a room in which all lights are on.
- Play at the farthest distance possible from the screen.
- If your hands, wrists, or arms become tired or sore while playing, stop and rest for several hours before playing again.
- If you continue to have sore hands, wrists, or arms during or after playing, stop the game and see a doctor.

When you play games on your phone, you may experience occasional discomfort in your hands, arms, shoulders, neck, or other parts of your body. Follow the instructions to avoid problems such as tendonitis, carpal tunnel syndrome, or other musculoskeletal disorders.

PROTECT YOUR HEARING
To prevent possible hearing damage, do not listen at high volume levels for long periods. Exercise caution when holding your device near your ear while the loudspeaker is in use.

PRIVACY:
Please note that you must respect the laws and regulations in force in your jurisdiction or other jurisdiction(s) where you will use your mobile phone regarding taking photographs and recording sounds with your mobile telephone. Pursuant to such laws and regulations, it may be strictly forbidden to take photographs and/or to record the voices of other people or any of their personal attributes, and duplicate or distribute them, as this may be considered to be an invasion of privacy. It is the user's sole responsibility to ensure that prior authorisation be obtained, if necessary, in order to record private or confidential conversations or take a photograph of another person; the manufacturer, the seller or vendor of your mobile phone (including the operator) disclaim any liability which may result from the improper use of the mobile phone.

BATTERY:
Please note your phone is a unibody device, the back cover and battery are not removable. Observe the following precautions:

- Do not attempt to open the back cover,
- Do not attempt to eject, replace and open battery,
- Do not punctuate the back cover of your phone,
- Do not burn or dispose of your phone in household rubbish or store it at temperature above 60°C.

Phone and battery as a unibody device must be disposed of in accordance with locally applicable environmental regulations.

This symbol on your telephone, the battery and the accessories means that these products must be taken to collection points at the end of their life:
- Municipal waste disposal centres with specific bins for these items of equipment
- Collection bins at points of sale.

They will then be recycled, preventing substances being disposed of in the environment, so that their components can be reused.

In European Union countries:
These collection points are accessible free of charge.

All products with this sign must be brought to these collection points. In non-European Union jurisdictions:
Items of equipment with this symbol are not to be thrown into ordinary bins if your jurisdiction or your region has suitable recycling and collection facilities; instead they are to be taken to collection points for them to be recycled.

CAUTION: RISK OF EXPLOSION IF BATTERY IS REPLACED BY AN INCORRECT TYPE. DISPOSE OF USED BATTERIES ACCORDING TO THE INSTRUCTIONS.

CHARGERS
Mains powered chargers will operate within the temperature range of 0°C to 40°C.

The chargers designed for your mobile phone meet with the standard for safety of information technology equipment and office equipment use. They are also compliant to the ecodesign directive 2009/125/EC. Due to different applicable electrical specifications, a charger you purchased in one jurisdiction may not work in another jurisdiction. They should be used for this purpose only.

RADIO WAVES:
Specific Absorption Rate (IEEE)
THIS MOBILE PHONE MEETS THE GOVERNMENT'S REQUIREMENTS FOR EXPOSURE TO RADIO WAVES.

Your mobile phone is a radio transmitter and receiver. It is designed and manufactured not to exceed the emission limits for exposure to radio-frequency (RF) energy. These limits are part of comprehensive guidelines and establish permitted levels of RF energy for the general population. The guidelines are based on standards that were developed by independent scientific organizations through periodic and thorough evaluation of scientific studies. These guidelines include a substantial safety margin designed to ensure the safety of all persons, regardless of age and health.

The exposure standard for mobile phones employs a unit of measurement known as the Specific Absorption Rate, or SAR.

The SAR limit set by public authorities such as the Federal Communications Commission of the US Government (FCC), or by Industry Canada, is 1.6 W/kg averaged over 1 gram of body tissue. Tests for SAR are conducted using standard operating positions with the mobile phone transmitting at its highest certified power level in all tested frequency bands.

Although the SAR is determined at the highest certified power level, the actual SAR level of the mobile phone while operating can be well below the maximum value. This is because the mobile phone is designed to operate at multiple power levels so as to use only the power required to reach the network. In general, the closer you are to a wireless base station antenna, the lower the power output of the mobile phone.

Before a mobile phone model is available for sale to the public, compliance with national regulations and standards must be shown. The highest SAR value for this model mobile phone when tested is 1.13 W/kg for use at the ear and 1.44 W/kg for use close to the body. While there may be differences between the SAR levels of various mobile phones and at various positions, they all meet the government requirement for RF exposure.

For body-worn operation, the mobile phone meets FCC RF exposure guidelines provided that it is used with a non-metallic accessory with the handset at least 10 mm from the body. Use of other accessories may not ensure compliance with FCC RF exposure guidelines.

Additional information on SAR can be found on the Cellular Telecommunications & Internet Association (CTIA) Web site: <http://www.phonefacts.net> The World Health Organization (WHO) considers that present scientific information does not indicate the need for any special precautions for use of mobile phones. If individuals are concerned, they might choose to limit their own or their children's RF exposure by limiting the length of calls, or using "hands-free" devices to keep mobile phones away from the head and body. (fact sheet n°193).

Additional WHO information about electromagnetic fields and public health are available on the following website: <http://www.who.int/peh-emf>.

This equipment has been tested and found to comply with the limits for a Class B digital device pursuant to part 15 of the FCC Rules. These limits are designed to provide reasonable protection against harmful interference in a residential installation. This equipment generates, uses and can radiate radio frequency energy and, if not installed and used in accordance with the instructions, may cause harmful interference to radio communications. However, there is no guarantee that interference to radio or television reception, which can be determined by turning the equipment off and on, the user is encouraged to try to correct the interference by one or more of the following measures:

- Reorient or relocate the receiving antenna.
- Increase the separation between the equipment and receiver.
- Connect the equipment into an outlet on a circuit different from that to which the receiver is connected.
- Consult the dealer or an experienced radio/TV technician for help. Changes or modifications not expressly approved by the party responsible for compliance could void the user's authority to operate the equipment.

For the receiver devices associated with the operation of a licensed radio service (e.g. FM broadcast), they bear the following statement: This device complies with Part 15 of the FCC Rules. Operation is subject to the condition that this device does not cause harmful interference.

For other devices, they bear the following statement: This device complies with Part 15 of the FCC Rules. Operation is subject to the following two conditions:

- (1) This device may not cause harmful interference
- (2) This device must accept any interference received, including interference that may cause undesired operation.

Your mobile phone is equipped with a built-in antenna. For optimal operation, you should avoid touching it or degrading it.

As mobile devices offer a range of functions, they can be used in positions other than against your ear. In such circumstances the device will be compliant with the guidelines when used with headset or USB data cable. If you are using another accessory ensure that whatever product is used is free of any metal and that it positions the mobile phone at least 10 mm away from the body.

Specific Absorption Rate (ICNIRP)
Proof of compliance with international standards (ICNIRP) or with European Directive 1999/5/EC (R&TTE) is required of all mobile phone models before they can be put on the market. The protection of the health and safety for the user and any other person is an essential requirement of these standards or this directive.

THIS DEVICE MEETS INTERNATIONAL GUIDELINES FOR EXPOSURE TO RADIO WAVES

Your mobile device is a radio transmitter and receiver. It is designed not to exceed the limits for exposure to radio waves (radio frequency electromagnetic fields) recommended by international guidelines. The guidelines were developed by an independent scientific organization (ICNIRP) and include a substantial safety margin designed to assure the safety of all persons, regardless of age and health.

The radio wave exposure guidelines use a unit of measurement known as the Specific Absorption Rate, or SAR. The SAR limit for mobile devices is 2 W/kg.

Tests for SAR are conducted using standard operating positions with the device transmitting at its highest certified power level in all tested frequency bands. The highest SAR values under the ICNIRP guidelines for this device model are:

Maximum SAR for this model and conditions under which it was recorded.		
Head SAR	GSM900 + Bluetooth	0.787 W/kg
Body-worn SAR	GSM900 + Bluetooth	1.02 W/kg

During use, the actual SAR values for this device are usually well below the values stated above. This is because, for purposes of system efficiency and to minimize interference on the network, the operating power of your mobile device is automatically decreased when full power is not needed for the call. The lower the power output of the device, the lower its SAR value.

Body-worn SAR testing has been carried out at a separation distance of 10 mm. To meet RF exposure guidelines during body-worn operation, the device should be positioned at least this distance away from the body.

If you are not using an approved accessory ensure that whatever product is used is free of any metal and that it positions the phone the indicated distance away from the body.

Organizations such as the World Health Organization and the US Food and Drug Administration have stated that if people are concerned and want to reduce their exposure they could use a hands-free device, or keep the phone away from the head and body during phone calls, or reduce the amount of time spent on the phone.

For more information you can go to www.alcatelonetouch.com Additional information about electromagnetic fields and public health are available on the following site: <http://www.who.int/peh-emf>.

Your telephone is equipped with a built-in antenna. For optimal operation, you should avoid touching it or degrading it. As mobile devices offer a range of functions, they can be used in positions other than against your ear. In such circumstances the device will be compliant with the guidelines when used with headset or usb data cable. If you are using another accessory ensure that whatever product is used is free of any metal and that it positions the phone at least 10 mm away from the body.

LICENCES
eZiText™ eZiText™ and Zi™ are trademarks of Zi Corporation and/or its Affiliates.

Obigo® is a registered trademark of Obigo AB.

microSD Logo is a trademark.

The Bluetooth word mark and logos are owned by the Bluetooth SIG, Inc. and any use of such marks by TCT Mobile Limited and its affiliates is under license. Other trademarks and trade names are those of their respective owners.

ALCATEL ONETOUCH 2007X/2007D Bluetooth Declaration ID D022118

Facebook and the f Logo are trademarks of Facebook, Inc., and are used under license.

Twitter and the T Logo are trademarks of Twitter, Inc., and are used under license.

General information

Internet address: www.alcatelonetouch.com

Hot Line Number: see "TCT Mobile Services" leaflet or go to our website.

Address: Room 1910-12A, Tower 3, China HK City, 33 Canton Road, Tsimsatsui, Kowloon, Hong Kong

On our website, you will find our FAQ (Frequently Asked Questions) section. You can also contact us by e-mail to ask any questions you may have.

An electronic version of this user guide is available in English and other languages according to availability on our server: www.alcatelonetouch.com

Your telephone is a transceiver that operates on GSM networks with 900 and 1800 MHz bands.

CE 1588

This equipment is in compliance with the essential requirements and other relevant provisions of Directive 1999/5/EC. The entire copy of the Declaration of Conformity for your telephone can be accessed through our website: www.alcatelonetouch.com.

Protection against theft ⁽¹⁾
Your telephone is identified by an IMEI (phone serial number) shown on the packaging label and in the phone's memory. We recommend that you note the number the first time you use your telephone by entering *#06# and keep it in a safe place. It may be requested by the police or your operator if your telephone is stolen. This number allows your mobile telephone to be blocked preventing a third person from using it, even with a different SIM card.

Disclaimer
There may be certain differences between the user manual description and the phone's operation, depending on the software release of your telephone or specific operator services.

TCT Mobile shall not be held legally responsible for such differences, if any, nor for their potential consequences, which responsibility shall be borne by the operator exclusively. This handset may contain materials, including applications and software in executable or source code form, which is submitted by third parties for inclusion in this handset ("Third Party Materials"). All third party

⁽¹⁾ Contact your network operator for service availability.

Regulatory information ...

The following approvals and notices apply in specific regions as noted.

2007X:

2007D:

Warranty

Your phone is warranted against any defect or malfunctioning which may occur in conditions of normal use during the warranty period of twelve (12) months ⁽¹⁾ from the date of purchase as shown on your original invoice.

Batteries ⁽²⁾ and accessories sold with your phone are also warranted against any defect which may occur during the first six (6) months ⁽¹⁾ from the date of purchase as shown on your original invoice.

In case of any defect of your phone which prevents you from normal use thereof, you must immediately inform your vendor and present your phone with your proof of purchase.

This warranty covers the cost of parts and labor but excludes any other costs.

This warranty shall not apply to defects to your phone and/or accessory due to (without any limitation):

- Non-compliance with the instructions for use or installation, or with technical and safety standards applicable in the geographical area where your phone is used.
- Connection to any equipment not supplied or not recommended by TCT Mobile Limited,
- Modification or repair performed by individuals not authorized by TCT Mobile Limited or its affiliates or your vendor,
- Modification, adjustment or alteration of software or hardware performed by individuals not authorized by TCT Mobile Limited,
- Inclement weather, lightning, fire, humidity, infiltration of liquids or foods, chemical products, download of files, crash, high voltage, corrosion, oxidation...

Your phone will not be repaired in case labels or serial numbers (IMEI) have been removed or altered.

There are no express warranties, whether written, oral or implied, other than this printed limited warranty or the mandatory warranty provided by your country or jurisdiction.

⁽¹⁾ The warranty period may vary depending on your country.

⁽²⁾ The life of a rechargeable mobile phone battery in terms of conversation time standby time, and total service life, will depend on the conditions of use and network configuration. Batteries being considered expendable supplies, the specifications state that you should obtain optimal performance for your phone during the first six months after purchase and for approximately 200 more recharges.

⁽¹⁾ The warranty period may vary depending on your country.

⁽²⁾ The life of a rechargeable mobile phone battery in terms of conversation time standby time, and total service life, will depend on the conditions of use and network configuration. Batteries being considered expendable supplies, the specifications state that you should obtain optimal performance for your phone during the first six months after purchase and for approximately 200 more recharges.