

- 5-in-1 sensor
- Phillips head screwdriver
- Spray lubricant

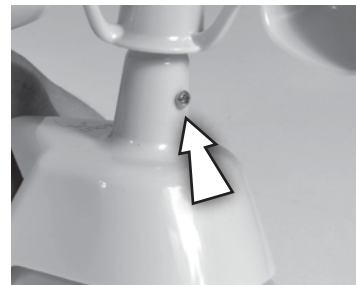
The Pro Add-On with dual solar panels for the 5-in-1 sensor optimizes the sensor's sun exposure, allowing the sensor's solar-powered aspirating fan to run more often. The sensor's internal fan helps to optimize the measurement of the temperature throughout all hours of the day.

The AcuRite 5-in-1 sensor features a modular design that allows for the replacement of certain parts. The electronic components inside the 5-in-1 sensor are sensitive - **HANDLE WITH CARE.**

NOTE: A 5-in-1 sensor is required to install the Pro Add-On.



Scan QR code to view a video.

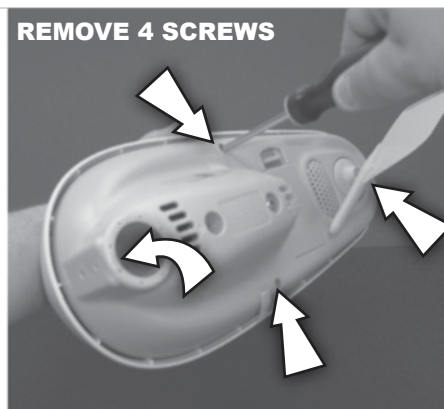


### TO LUBRICATE:

1. Remove screw located below sensor's wind cups. Keep the screw for step 4.
2. Spray a small amount of lubricant into the hole.
3. Tip the 5-in-1 Sensor upside down (so wind cups are on the bottom), then right side up several times.
4. Reinsert the screw (removed during step 1) into hole.



### 5-IN-1 SENSOR PRO ADD-ON INSTALLATION



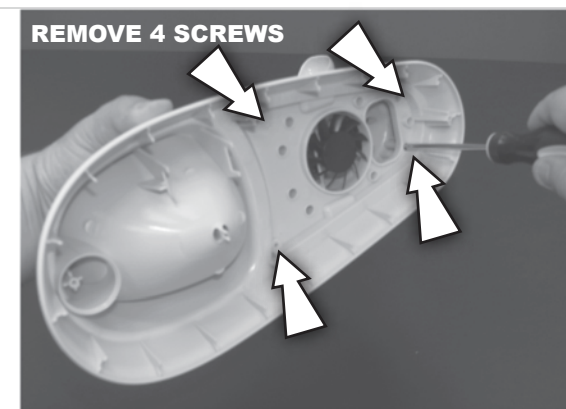
### REMOVE 4 SCREWS

1. Remove 4 LONG screws and separate the upper white portion from the lower gray portion of the sensor.



### SET ASIDE

2. Set aside the lower gray portion of the sensor and the screws for reassembly.



### REMOVE 4 SCREWS

3. Remove 4 SHORT screws, located on the upper white portion of the sensor near the fan assembly. Keep the screws for reassembly.



### REMOVE & DISCARD

KEEP!

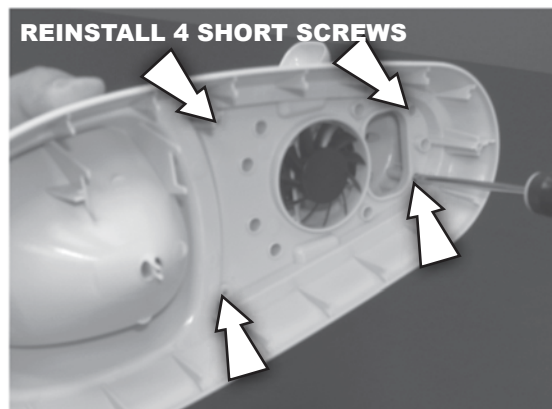
DISCARD

4. Gently remove the upper wind speed / solar assembly from the rain gauge assembly and discard.



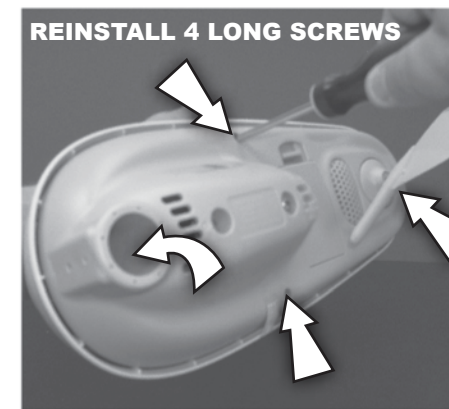
### INSTALL PRO ADD-ON

5. Line up the screw holes on the Pro Add-On with the rain gauge assembly.



### REINSTALL 4 SHORT SCREWS

6. Turn the upper white portion of the sensor over. Reinstall the 4 SHORT screws; tighten by hand.



### REINSTALL 4 LONG SCREWS

7. Reinstall 4 LONG screws to connect the upper white portion and lower gray portion of the 5-in-1 sensor. Installation is complete!